



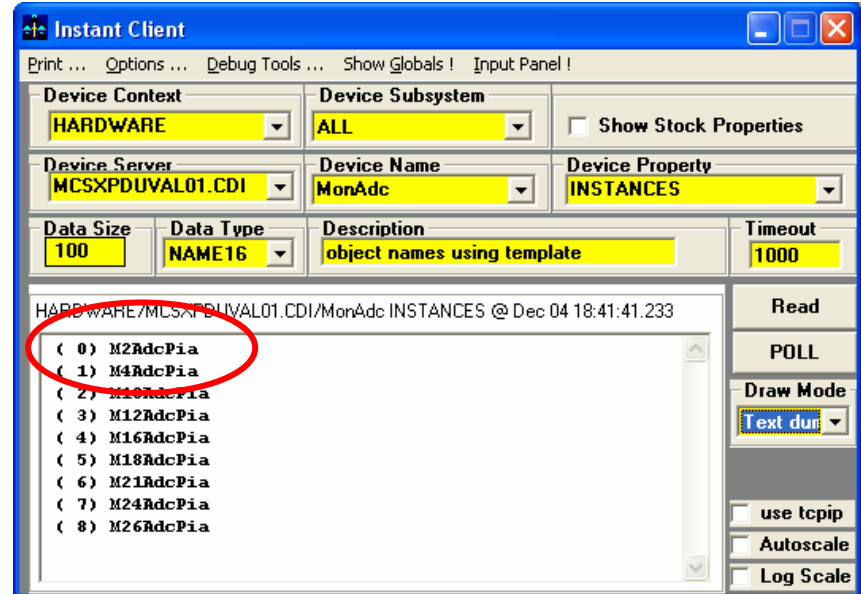
CDI News

New Features ...

- New property from Hardware server:
 - “INSTANCES” (to accompany “NINSTANCE”)
 - -> list of module instances of the selected TEMPLATE !

e.g.

M2AdcPia.rstTrg
M2AdcPia.rstOvl
M2AdcPia.trgMod
M2AdcPia.adcSta



[New Features ...]

- Alarm generation following bus error
 - Some bug fixes ...

[CDI Database Editor ...]

Still undergoing commissioning and feedback (Markus, Galina), but with one more visit from Igor ...

The screenshot shows the 'CDI Editor' application window with a menu bar (File, Edit) and a toolbar. The main area contains a table with columns: BUS, LINE, ADDRESS_BASE, ADDRESS_PARAMETE..., ACCESS, and FORMAT. The table lists various entries, many starting with 'MonAddPia:' and 'TrigPia:'. Below the table is a 'Row:' field with an 'Editor Type:' dropdown menu. To the right are buttons for 'Add Row', 'Clone Row', 'Row Up', and 'Row Down'. At the bottom are 'Apply' and 'Cancel' buttons. A status bar at the very bottom displays the message: '* Loading 'L:\servers\cdiaddr.csv' --> CDI file OK'.

	BUS	LINE	ADDRESS_BASE	ADDRESS_PARAMETE...	ACCESS	FORMAT
Open...	TEMPLATE	0	0	00:00		LONG
Save	TEMPLATE	0	0	00:01	WR	LONG
Save As...	TEMPLATE	0	0	00:02	WR	LONG
1 .../cdiaddr.csv	TEMPLATE	0	0	00:03	WR	LONG
Exit	TEMPLATE	0	0	00:01	WR	LONG
	TEMPLATE	0	0	00:02	WR	LONG
MonAddPia:sRamCt	TEMPLATE	0	0	00:03	WR	LONG
MonAddPia:mode	TEMPLATE	0	0	00:04	WR	LONG
MonAddPia:staDat	TEMPLATE	0	0	00:05	WR	LONG
MonAddPia:trgDly	TEMPLATE	0	0	00:07	WR	LONG
MonAddPia:setDB	TEMPLATE	0	0	00:08	WR	LONG
MonAddPia:synCnt	TEMPLATE	0	0	00:00	RD	LONG
MonAddPia:pl1pl2	TEMPLATE	0	0	01:00	RD	LONG
MonAddPia:pl3pl4	TEMPLATE	0	0	02:00	RD	LONG
MonAddPia:ramDat	TEMPLATE	0	0	03:00	RD	LONG
MonAddPia:ramCnt	TEMPLATE	0	0	04:00	RD	LONG
MonAddPia:livSta	TEMPLATE	0	0	05:00	RD	LONG
MonAddPia:dbSta	TEMPLATE	0	0	06:00	RD	LONG
MonAddPia:lvUmAk	TEMPLATE	0	0	07:00	RD	LONG
TrigPia:win1	TEMPLATE	0	0	00:00	WR	LONG
TrigPia:win2	TEMPLATE	0	0	00:01	WR	LONG
TrigPia:win3	TEMPLATE	0	0	00:02	WR	LONG
TrigPia:win4	TEMPLATE	0	0	00:03	WR	LONG
TrigPia:win12	TEMPLATE	0	0	00:00	RD	LONG