



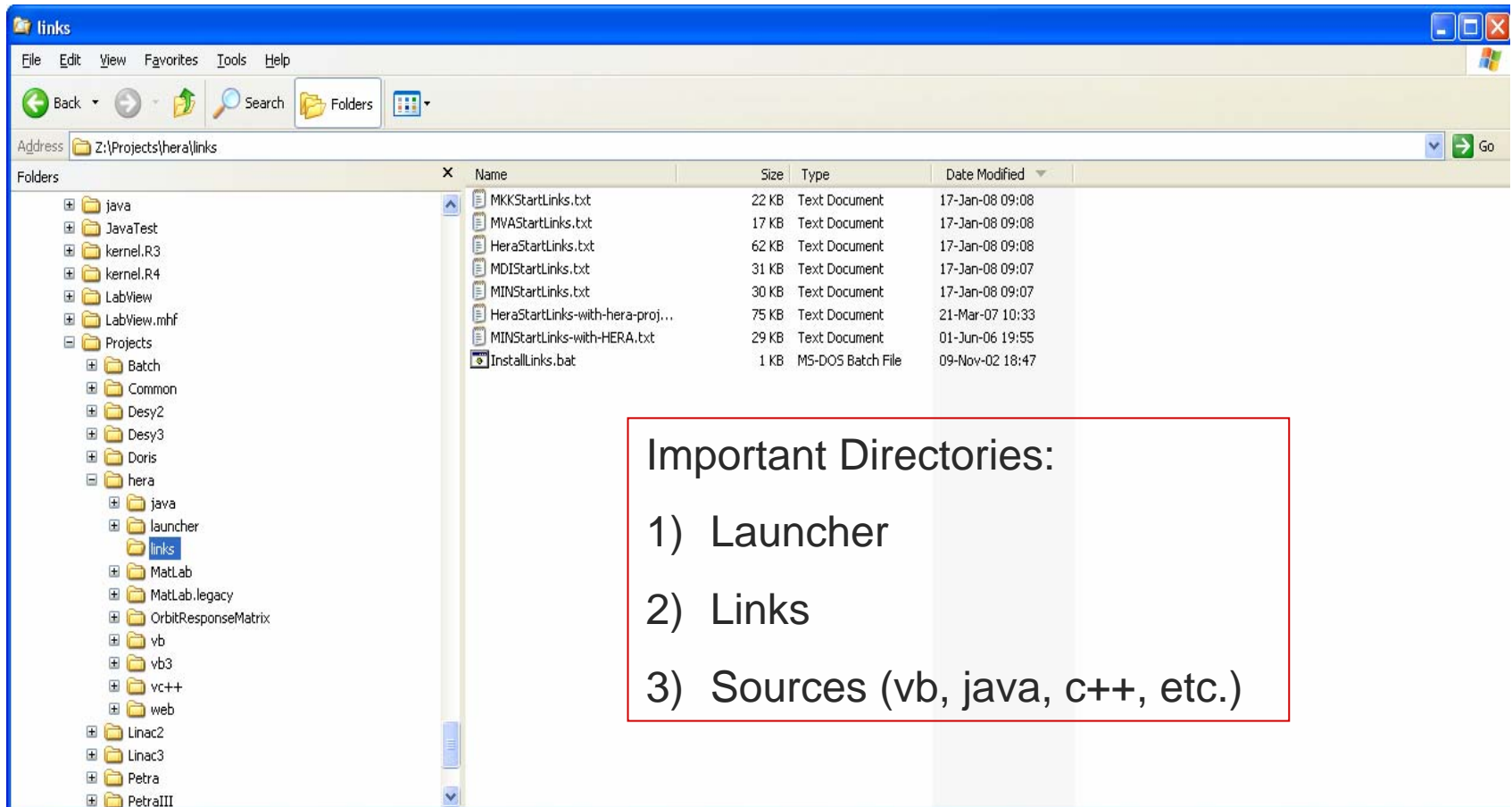
Installation and Deployment

[Just run Setup?]

- Windows:
 - Applications stored centrally (with regular backup)
 - Mirrored locally upon start
 - Start Link starts “launcher” + app command line
 - Avoid Single Point of Failure
- What we’ve been doing so far

Client Applications

Client Applications can be started by anybody at any time !



The screenshot shows a Windows Explorer window titled 'links' with the address bar set to 'Z:\Projects\hera\links'. The left pane shows a tree view of folders, with 'links' selected under the 'hera' folder. The right pane displays a list of files with columns for Name, Size, Type, and Date Modified.

Name	Size	Type	Date Modified
MKKStartLinks.txt	22 KB	Text Document	17-Jan-08 09:08
MVAStartLinks.txt	17 KB	Text Document	17-Jan-08 09:08
HeraStartLinks.txt	62 KB	Text Document	17-Jan-08 09:08
MDIStartLinks.txt	31 KB	Text Document	17-Jan-08 09:07
MINStartLinks.txt	30 KB	Text Document	17-Jan-08 09:07
HeraStartLinks-with-hera-proj...	75 KB	Text Document	21-Mar-07 10:33
MINStartLinks-with-HERA.txt	29 KB	Text Document	01-Jun-06 19:55
InstallLinks.bat	1 KB	MS-DOS Batch File	09-Nov-02 18:47

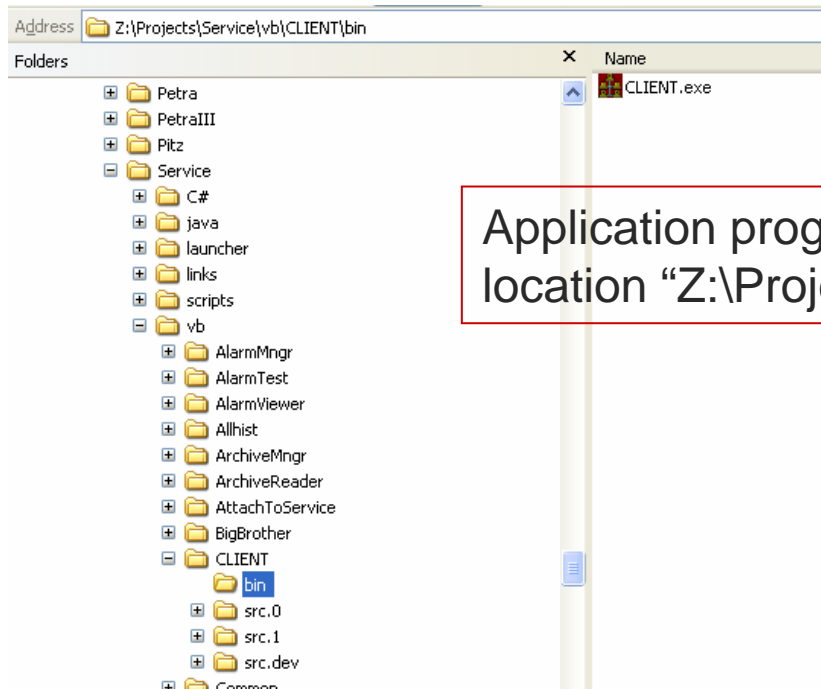
Important Directories:

- 1) Launcher
- 2) Links
- 3) Sources (vb, java, c++, etc.)

[Client Applications]

- Stored centrally
- Copied locally at startup
- Run locally

Client Applications



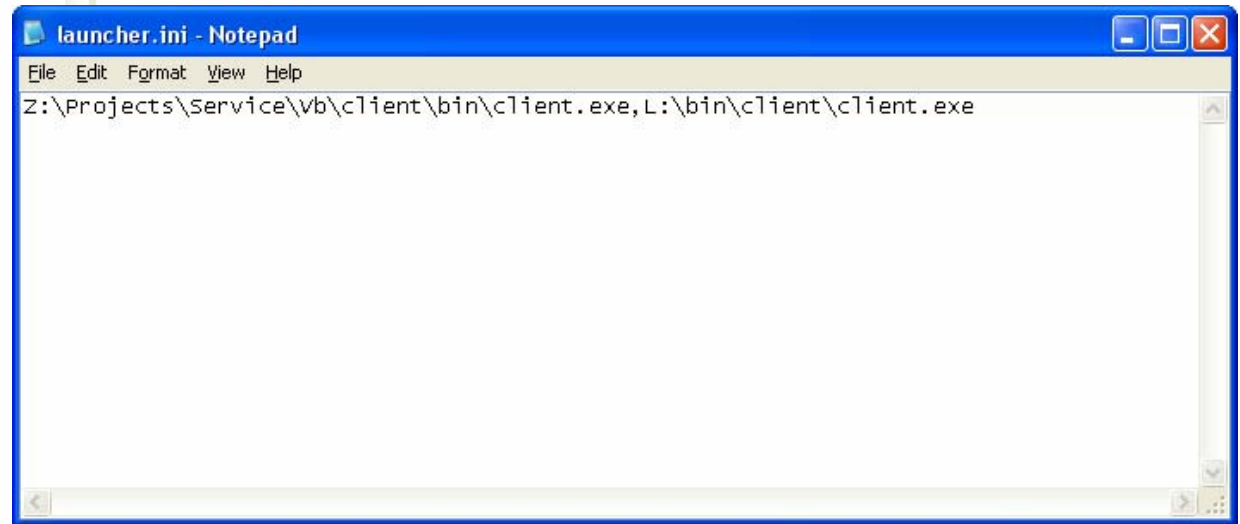
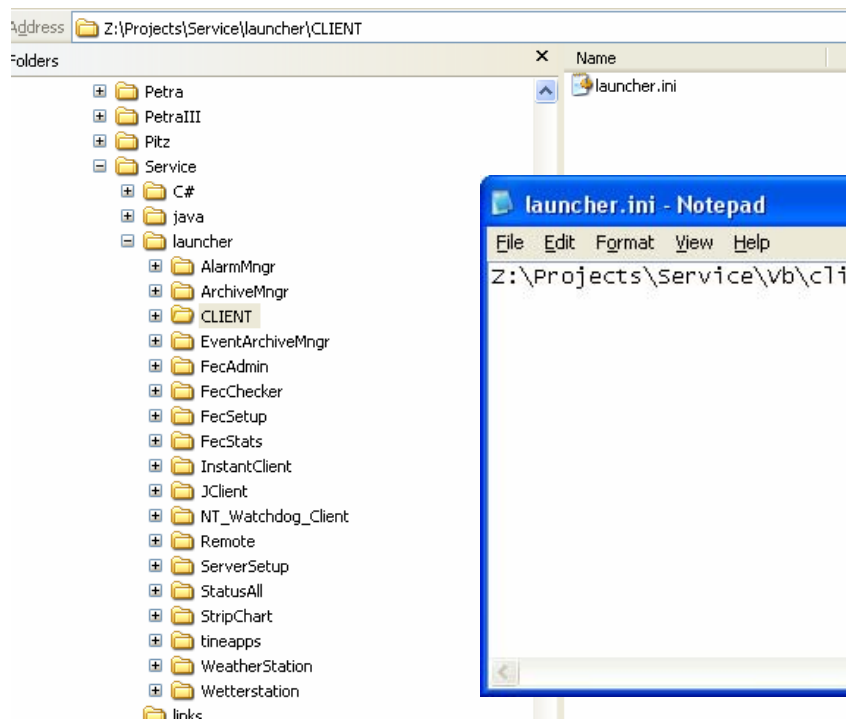
Application program “Client.exe” stored at the central location “Z:\Projects\Service\vb\Client\bin”

Desktop link to “Instant Client” :

`L:\system32\launcher.exe Z:\projects\Service\launcher\client\launcher.ini L:\bin\client\client.exe`

[Client Applications]

■ Launcher.ini

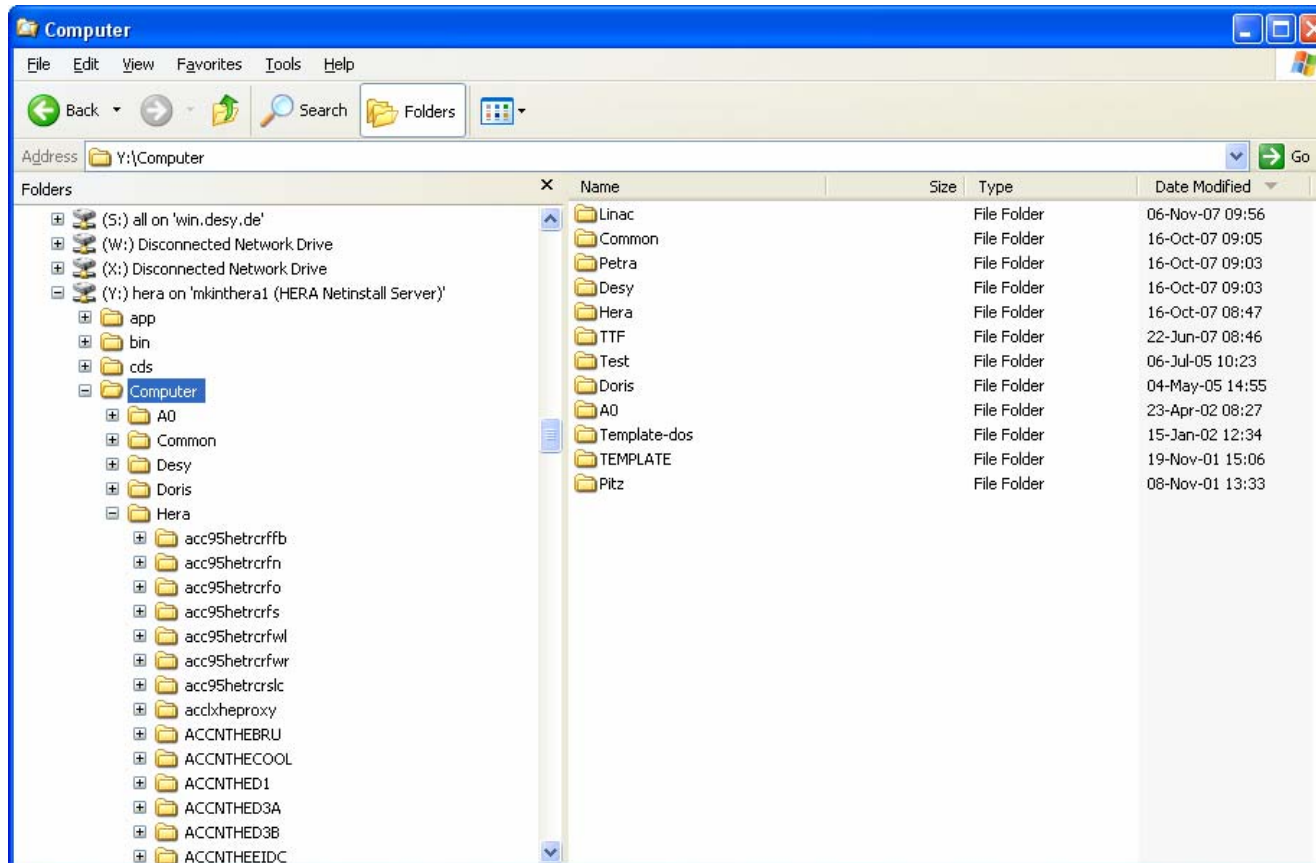


[Server Applications]

- Servers run at a single location
- Are NOT started by anybody at any time!
- Managed by the control system and the server developer !
- Do need to allow operators to re-start servers remotely (but in a systematically controlled manner)!

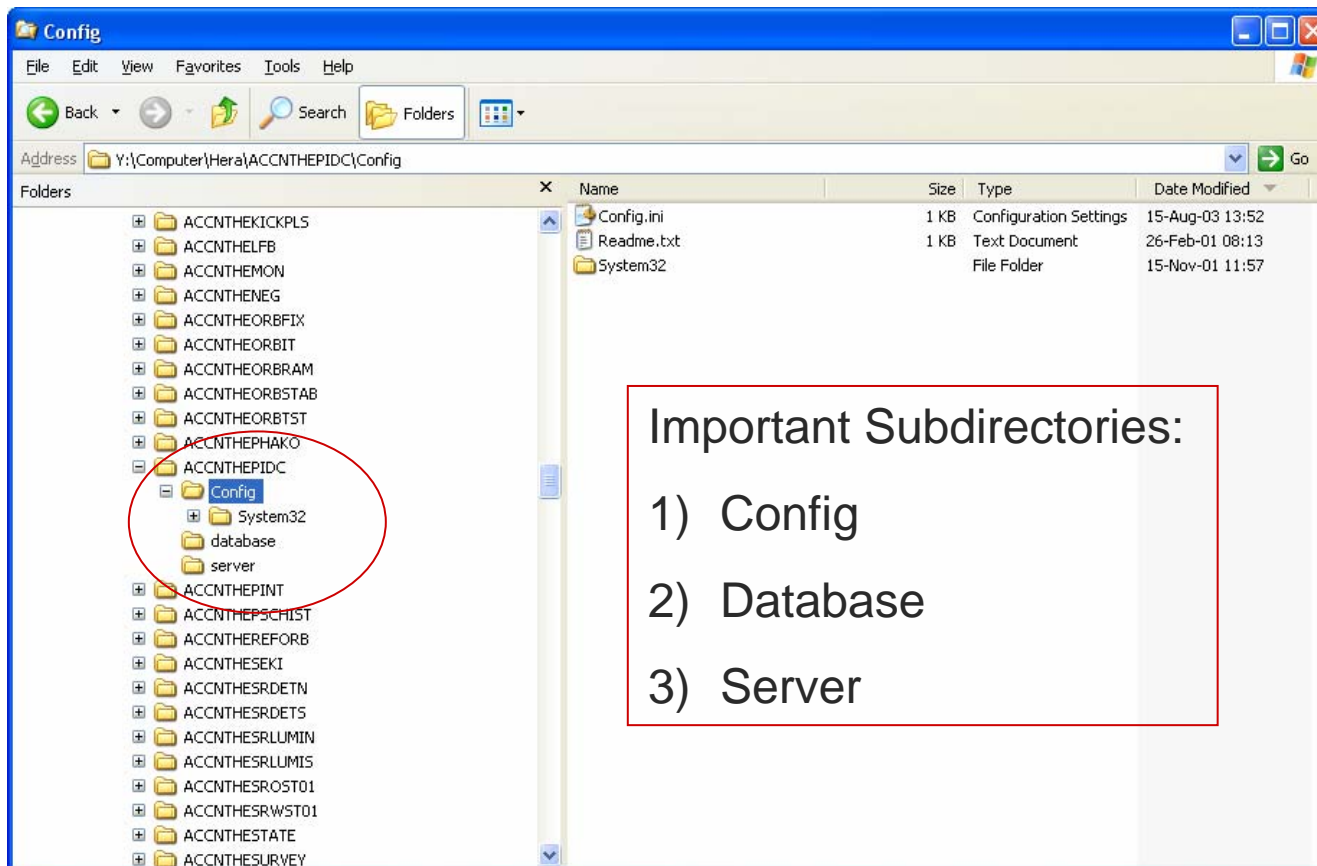
Server Applications

Host Computer oriented :



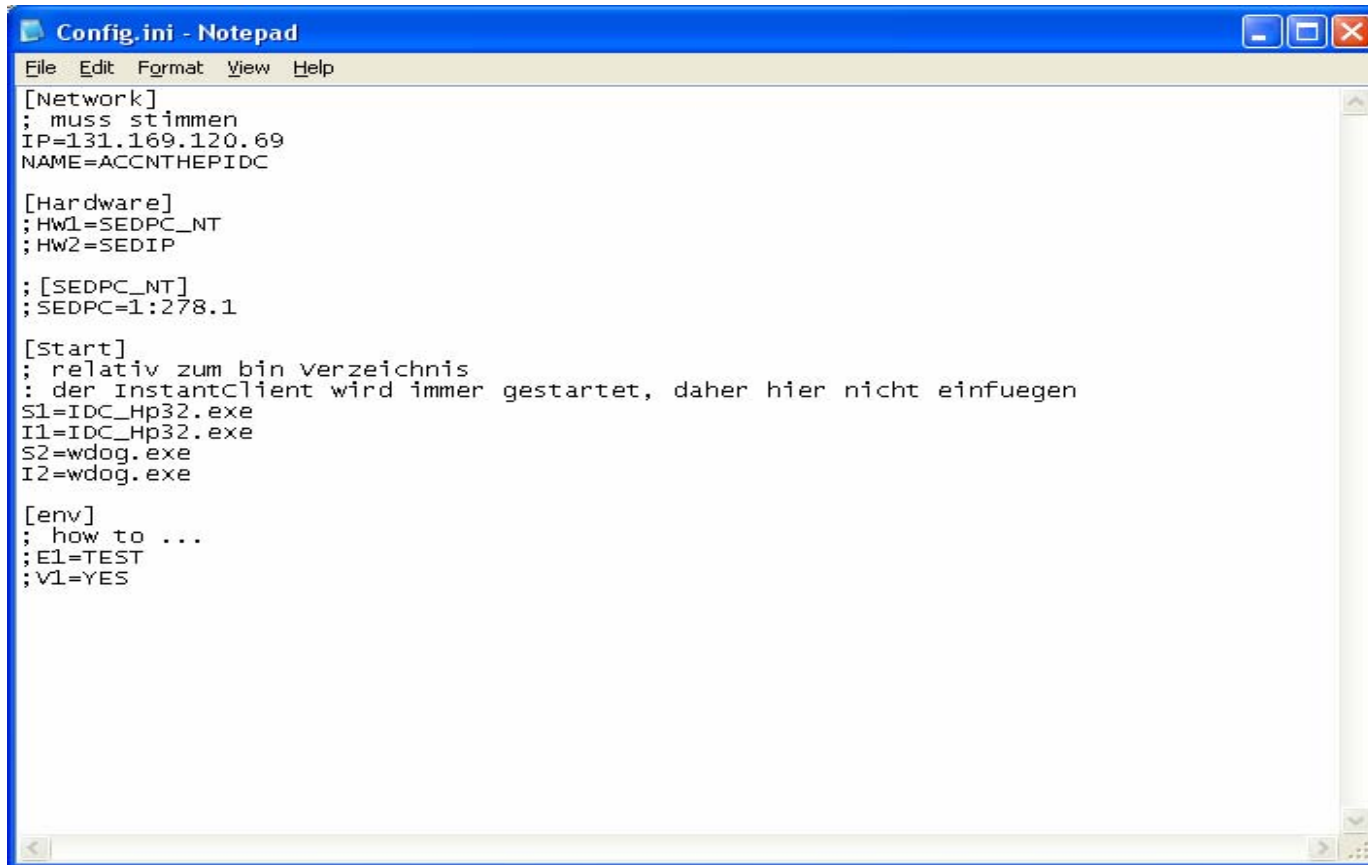
Server Applications

e.g. Windows Host :



Server Applications

Windows (config.ini) :



```
Config.ini - Notepad
File Edit Format View Help
[Network]
; muss stimmen
IP=131.169.120.69
NAME=ACCNTHEPIDC

[Hardware]
;HW1=SEDPC_NT
;HW2=SEDIP

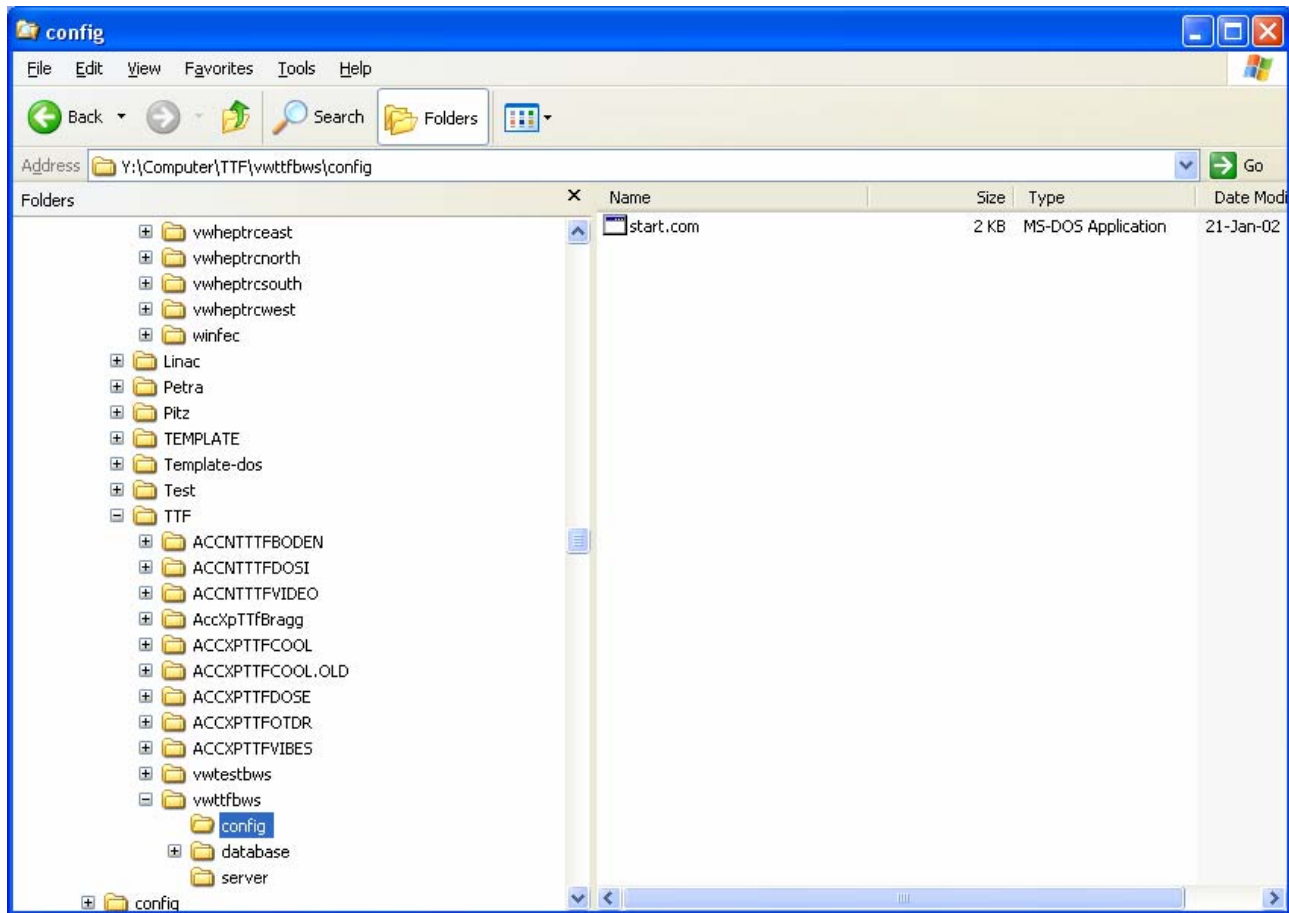
;[SEDPC_NT]
;SEDPC=1:278.1

[Start]
; relativ zum bin Verzeichnis
; der InstantClient wird immer gestartet, daher hier nicht einfügen
S1=IDC_Hp32.exe
I1=IDC_Hp32.exe
S2=wdog.exe
I2=wdog.exe

[env]
; how to ...
;E1=TEST
;V1=YES
```

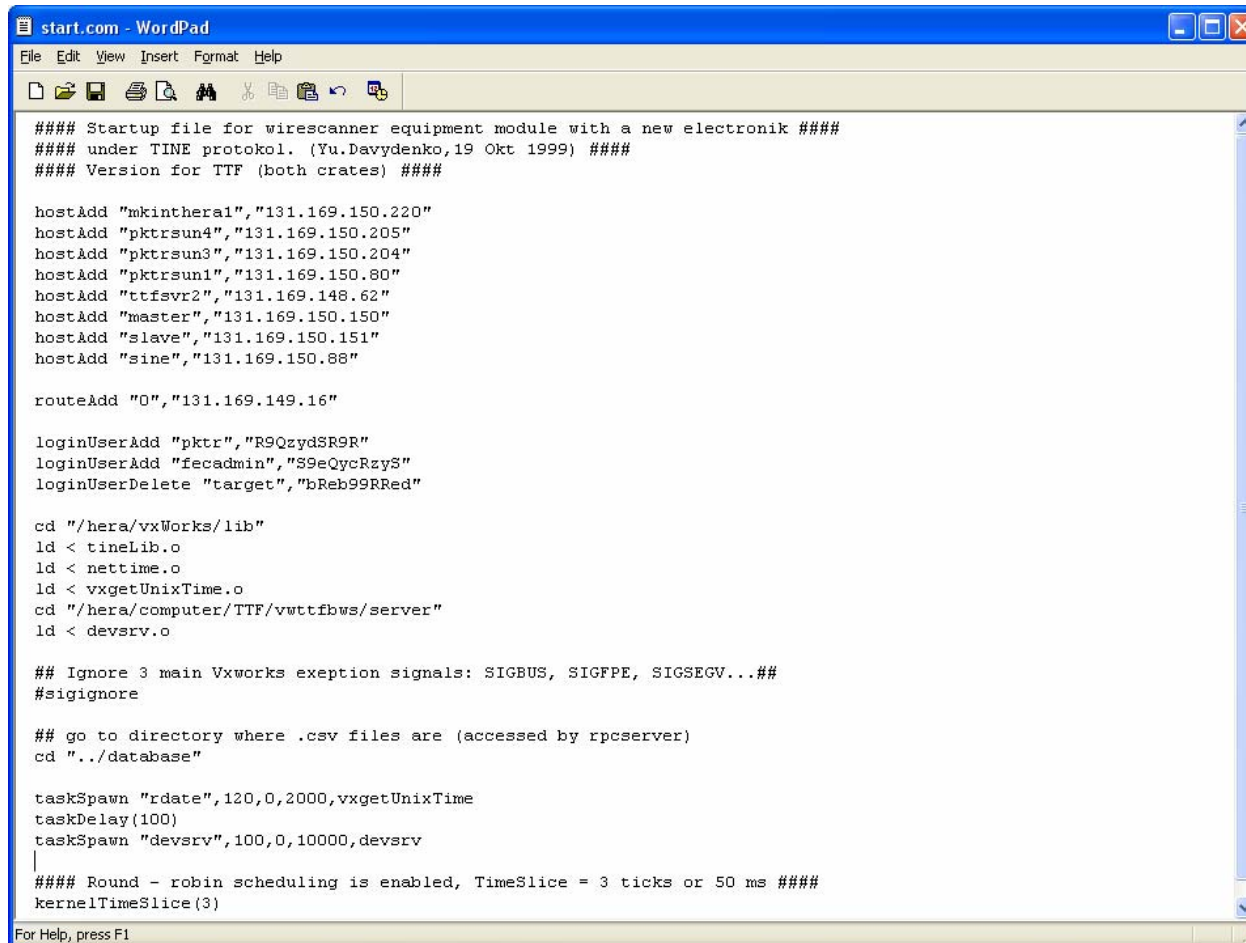
Server Applications

e.g. VxWorks Host :



Server Applications

VxWorks (start.com) :



```
##### Startup file for wireshcanner equipment module with a new elektronik #####
##### under TINE protokol. (Yu.Davydenko,19 Okt 1999) #####
##### Version for TTF (both crates) #####

hostAdd "mkinthera1","131.169.150.220"
hostAdd "pktrsun4","131.169.150.205"
hostAdd "pktrsun3","131.169.150.204"
hostAdd "pktrsun1","131.169.150.80"
hostAdd "ttfsvr2","131.169.148.62"
hostAdd "master","131.169.150.150"
hostAdd "slave","131.169.150.151"
hostAdd "sine","131.169.150.88"

routeAdd "0","131.169.149.16"

loginUserAdd "pktr","R9QzydSR9R"
loginUserAdd "fecadmin","S9eQycRzyS"
loginUserDelete "target","bReb99RRed"

cd "/hera/vxWorks/lib"
ld < tineLib.o
ld < nettime.o
ld < vxgetUnixTime.o
cd "/hera/computer/TTF/vwttfbws/server"
ld < devsrv.o

## Ignore 3 main Vxworks exeption signals: SIGBUS, SIGFPE, SIGSEGV...##
#sigignore

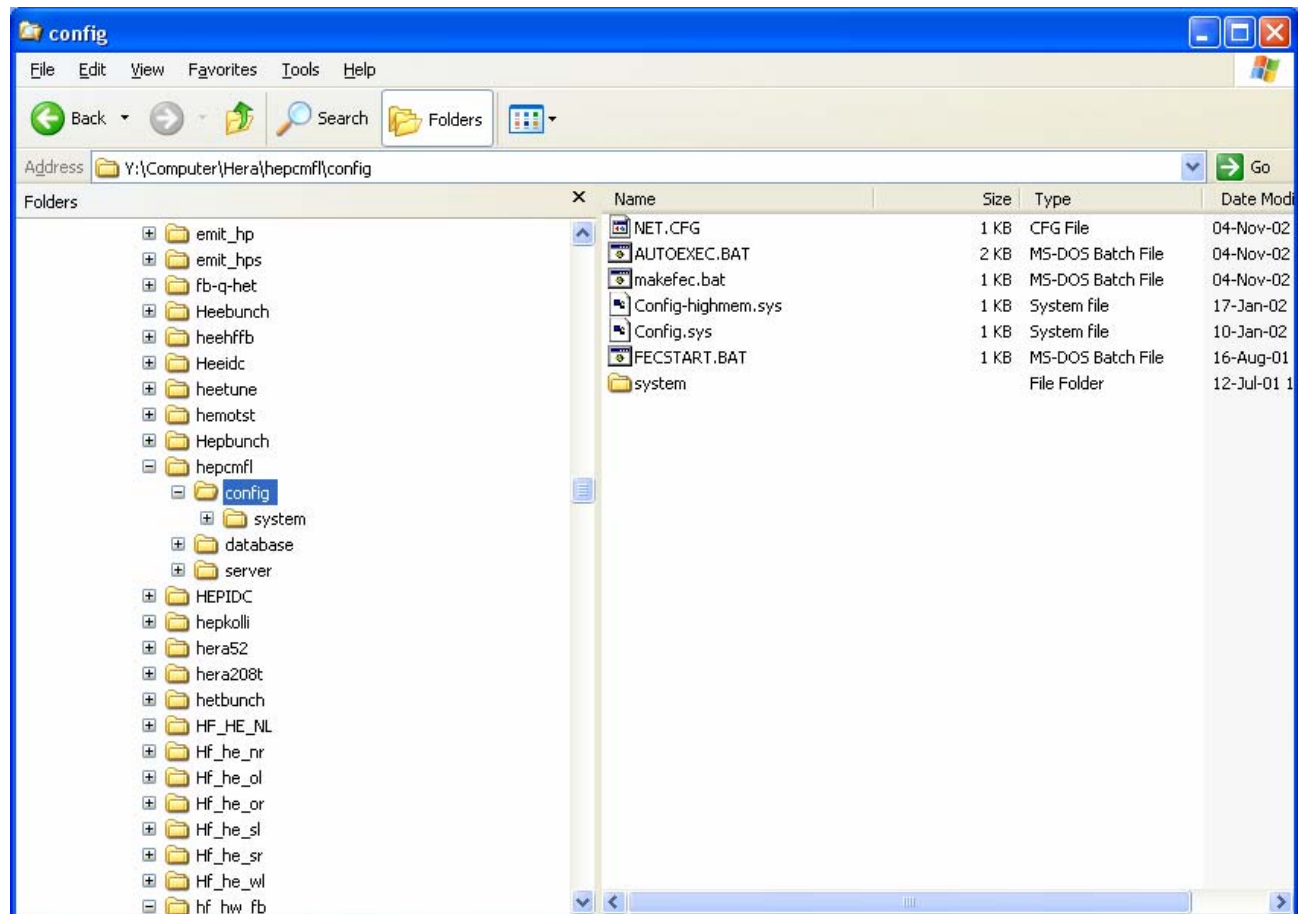
## go to directory where .csv files are (accessed by rpcserver)
cd "../database"

taskSpawn "rdate",120,0,2000,vxgetUnixTime
taskDelay(100)
taskSpawn "devsrv",100,0,10000,devsrv
|
##### Round - robin scheduling is enabled, TimeSlice = 3 ticks or 50 ms #####
kernelTimeSlice(3)

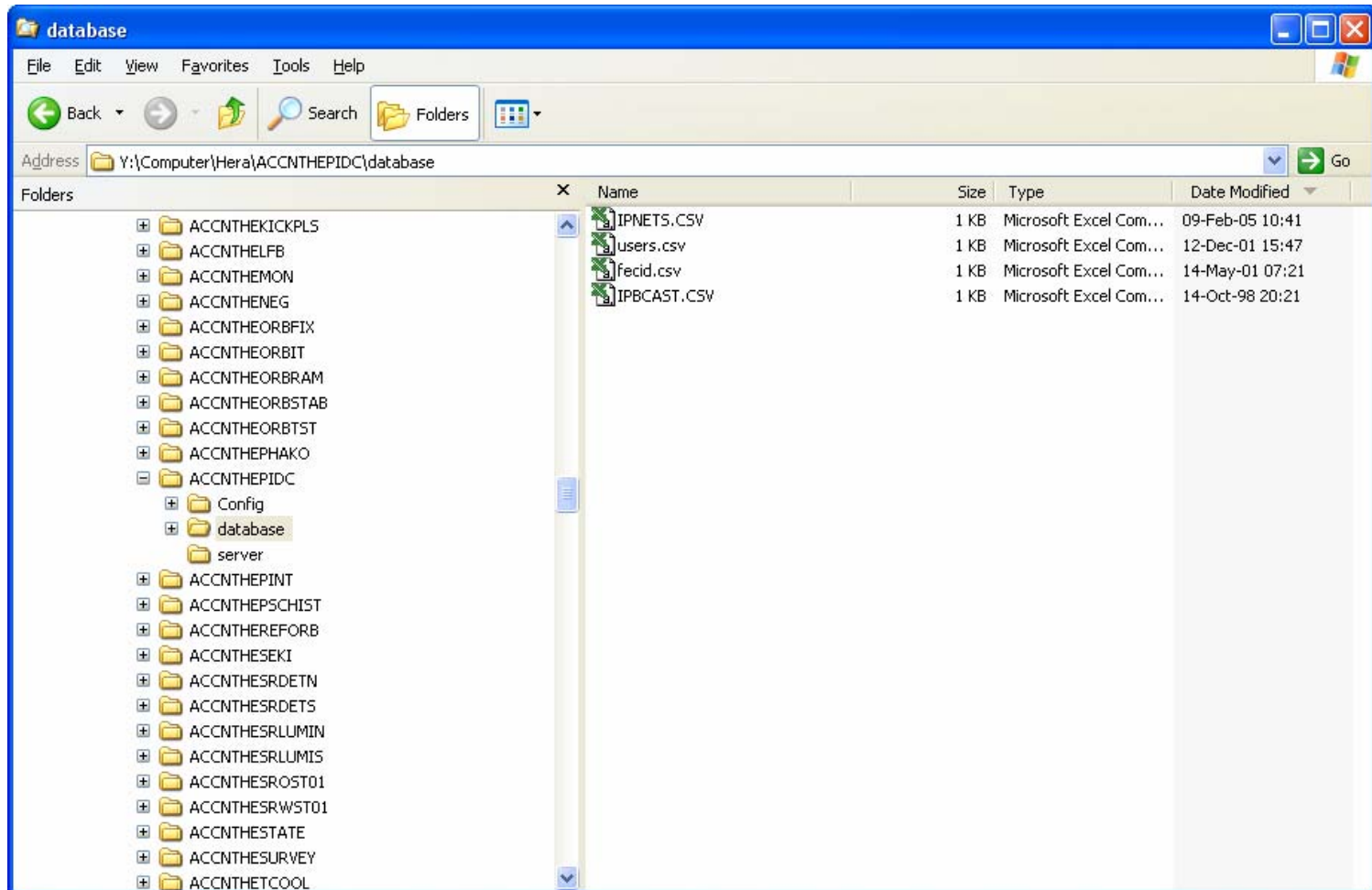
For Help, press F1
```

Server Applications

e.g. DOS Host :

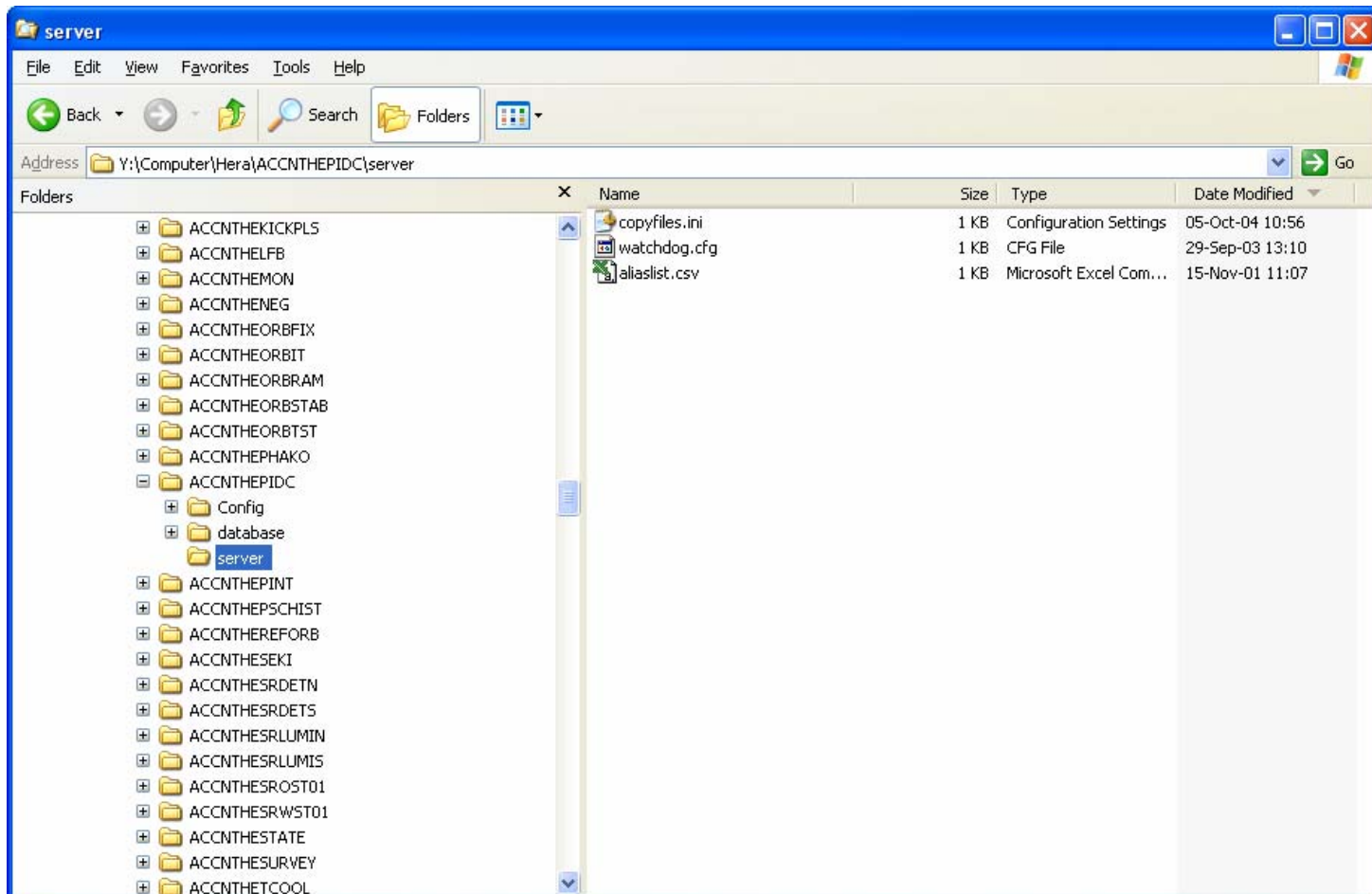


Server Applications



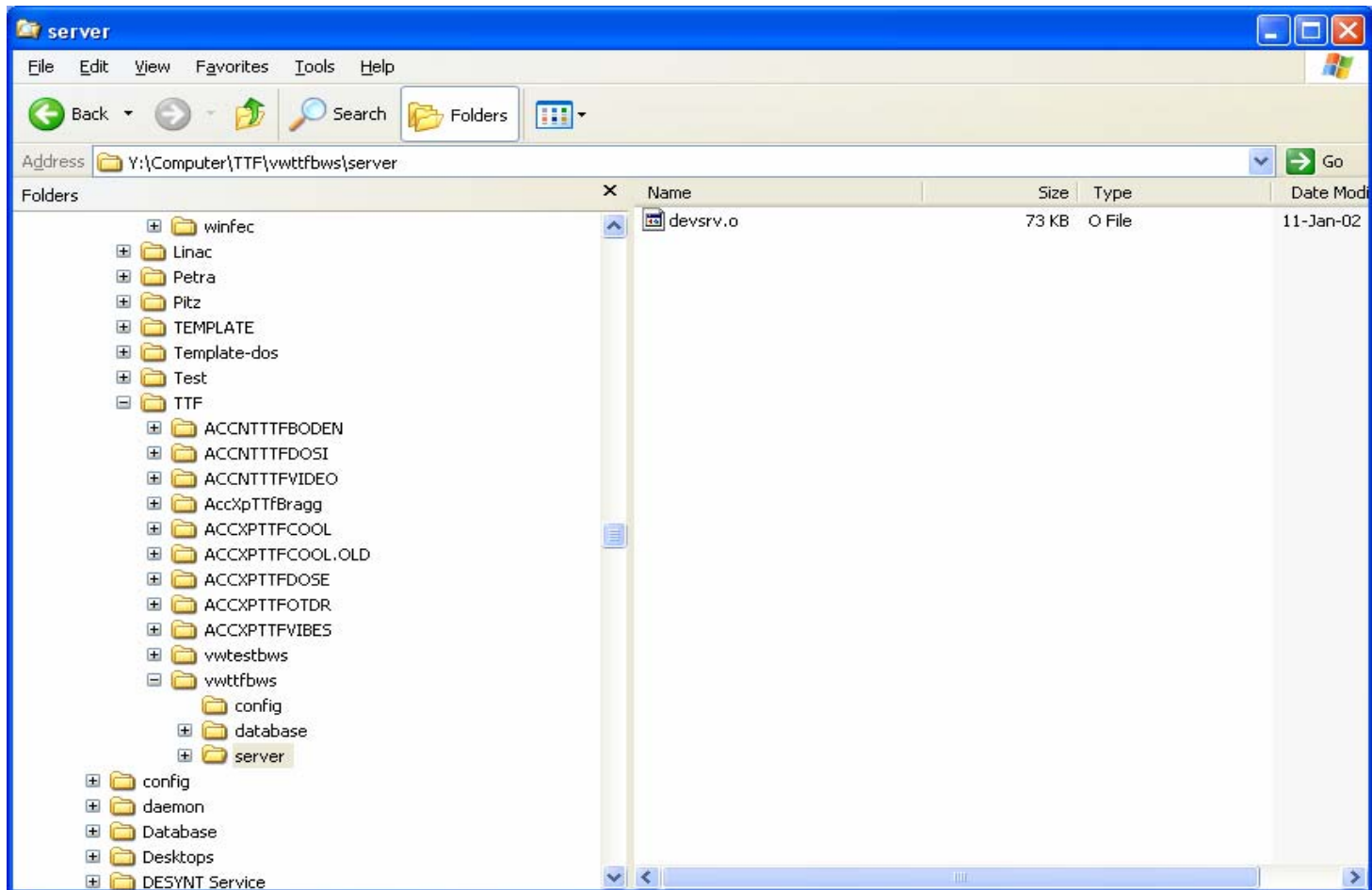
Server Applications

e.g. Windows Host (special file : copyfiles.ini)



Server Applications

e.g. Other Hosts : (e.g. VxWorks)



[What's Next ?]

- Central File Repository
 - (Steve – in 2 weeks)
- Java Web Start