



CDI News

[CDI News]

■ Bitfields implemented !

	A	B	C	D	E	F	G	H	I	J	K
1	NUMBER	NAME	BUS	LINE	MASK	ADDRESS	ACCESS	INPUT	FORMAT		
2	0	StsBits:Field1	BITFIELD		0 0x01				0 short		
3	0	StsBits:Field2	BITFIELD		0 0x02				0 short		
4	0	StsBits:Field3	BITFIELD		0 0x03				0 short		
5	0	SEKI:PowOn	TEMPLATE	0		0:09	WR		1 short		
6	0	SEKI:PowOff	TEMPLATE	0		0:09	WR		2 Short		
7	0	SEKI:HVOOn	TEMPLATE	0		0:09	WR		4 Short		
8	0	SEKI:HVOOff	TEMPLATE	0		0:09	WR		8 Short		
9	0	SEKI:Status	TEMPLATE	0		0:00			BITFIELD16: <StsBits>		
10	0	SEKI:SolI	TEMPLATE	0		10:10			Short		
11	1	KICK2-	SEDPC	1		16.48:	<SEKI>		Short		
12	2	KICK2+	SEDPC	1		10.32:	<SEKI>		Short		
13	3	SEPT-/+	SEDPC	1		25.80:	<SEKI>		Short		

Anything mapping to 'Status' from the TEMPLATE SEKI is automatically a bitfield of "StsBits" type !

68	58	HKI36.MPX2		SEDPC		1		17.176:0:0		1 Short
69	59	WKI12.MPX2		SEDPC		1		17.176:0:0		1 Short
70	60	KI40E.Status.Field1		SEDPC		1		9.32:0	WR	1 Short
71										

Need to Write 'Field1' ? Name the 'device' separately !

[CDI News]

- Field Bus Names

- CDI Property “BUSNAME” now gives the field bus name
- CDI Property “BUSTYPE” now gives the generic bus name (the old “BUSNAME”).

FIELD BUS Names

Case 1 : You don't add anything to your CDI database.

The screenshot shows the 'Instant Client' window with the following configuration:

- Device Context: HARDWARE
- Device Subsystem: ALL
- Show Stock Properties:
- Device Server: MSTXPLDUVAL.CDI
- Device Name: SE42E.Status.Field3
- Device Property: BUSTYPE
- Data Size: 1
- Data Type: NAME16
- Description: Bus type in use by selected device
- Timeout: 1000

The main display area shows the command: SE42E.Status.Field3 BUSTYPE @ May 15 21:06:01.578. The output is: (0) SEDPC. The 'Draw Mode' is set to 'Text disp'. Other options include 'use tcpip', 'Autoscale', and 'Log Scale' (checked).

The screenshot shows the 'Instant Client' window with the following configuration:

- Device Context: HARDWARE
- Device Subsystem: ALL
- Show Stock Properties:
- Device Server: MSTXPLDUVAL.CDI
- Device Name: SE42E.Status.Field3
- Device Property: BUSNAME
- Data Size: 1
- Data Type: NAME32
- Description: Fieldbus in use by selected device
- Timeout: 1000

The main display area shows the command: SE42E.Status.Field3 BUSNAME @ May 15 21:01:36.765. The output is: (0) SEDPC-line1. The 'Draw Mode' is set to 'Circles'. Other options include 'use tcpip', 'Autoscale', and 'Log Scale' (checked).

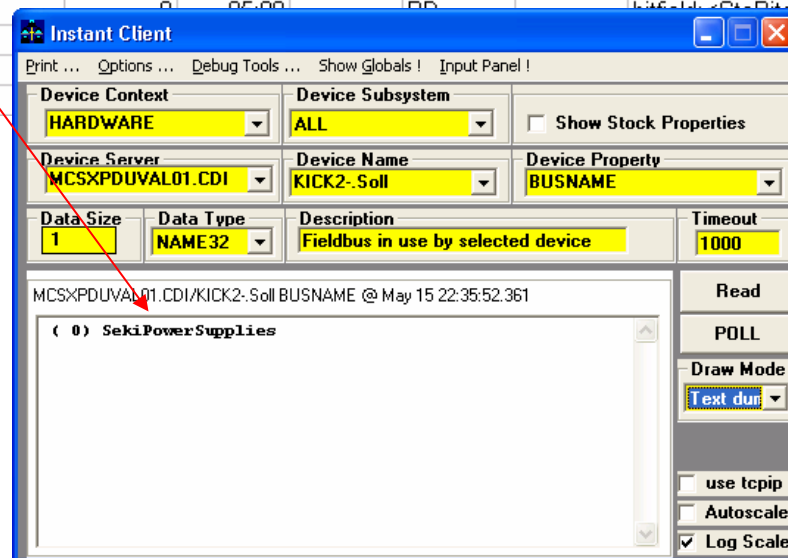
FIELD BUS Names

Case 2 : You add fieldbus names to your CDI database.

	A	B	C	D	E	F	G	H	I	J	K
1	NUMBER	NAME	BUS	LINE	ADDRESS	MASK	ACCESS	INPUT	FORMAT		
2	0	SEKI:SEkiPowerSupplies	FIELDBUS	1	0				short		
3	0	StsBits:field1	BITFIELD	1	0	0x01			short		
4	0	StsBits:field2	BITFIELD	1	0	0x02			short		
5	0	StsBits:field3	BITFIELD	1	0	0x03			short		
6	0	SEKI:PowOn	TEMPLATE	0	00:09		WR		1 short		
7	0	SEKI:PowOff	TEMPLATE	0	00:09		WR		2 Short		
8	0	SEKI:HVOOn	TEMPLATE	0	00:09		WR		4 Short		
9	0	SEKI:HVOOff	TEMPLATE	0	00:09		WR		8 Short		
10	0	SEKI:Status	TEMPLATE	0	05:00		RD		bits:bits:StsBits		
11	0	SEKI:SolI	TEMPLATE								
12	1	KICK2-	SEDPC								
13	2	KICK2+	SEDPC								

Cdiaddr.csv scan order :

- 1) Scan for FIELDBUS names
- 2) Scan for Bitfields
- 3) Scan for TEMPLATES
- 4) Scan for Devices



[CDI Issues]

- Separate Read/Write Address registers for CAN Bus Plugs (a la SEDAC bus plugs)
- Windows threading issue with multiple synchronous calls ???