

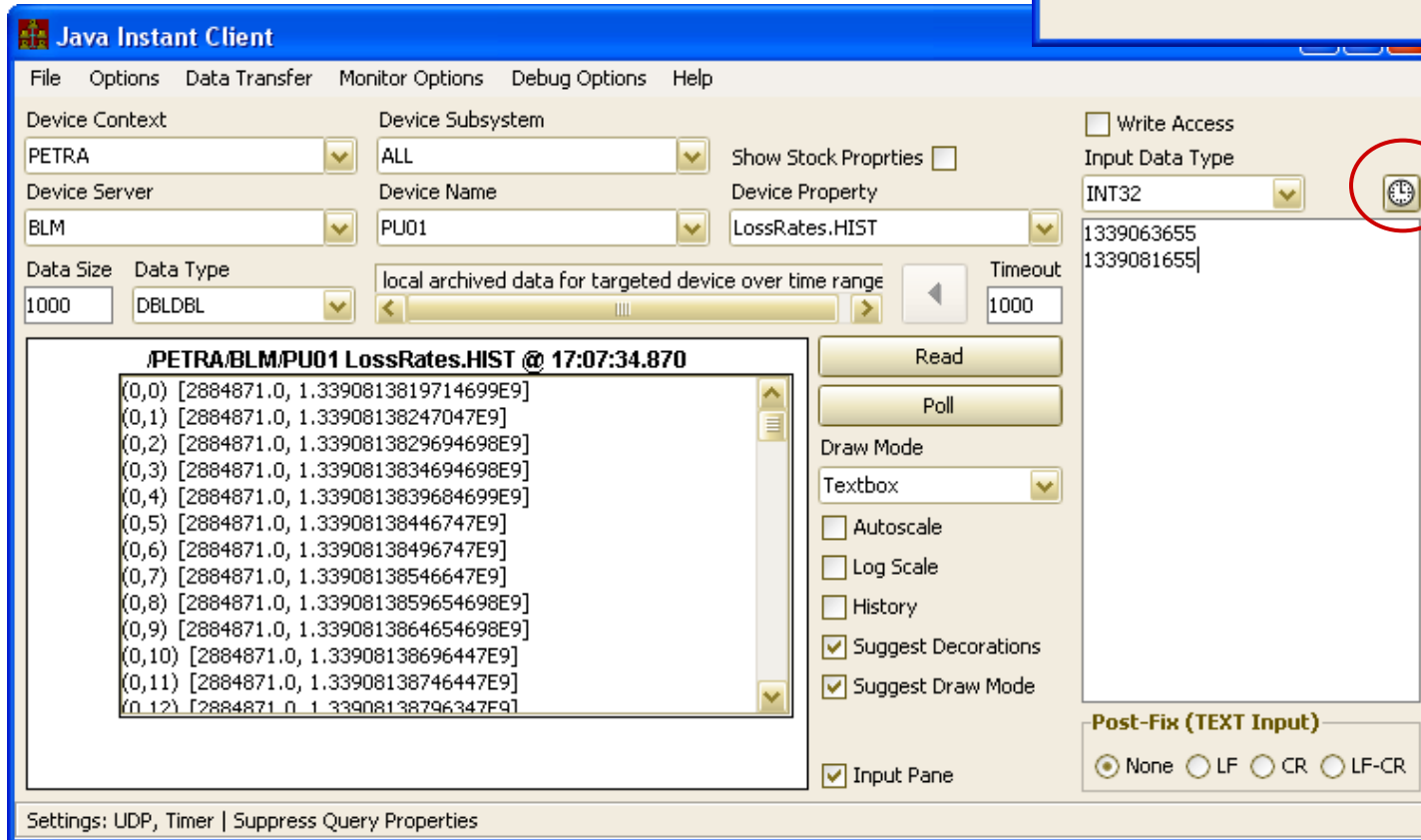
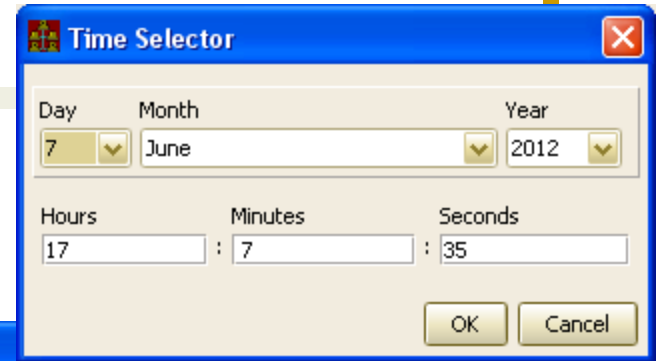
Central Services /
Common Applications

[Common Applications]

- Instant Client News
- Catching *10 msec events* in the Central Archive
- ENS/GENS synchronization

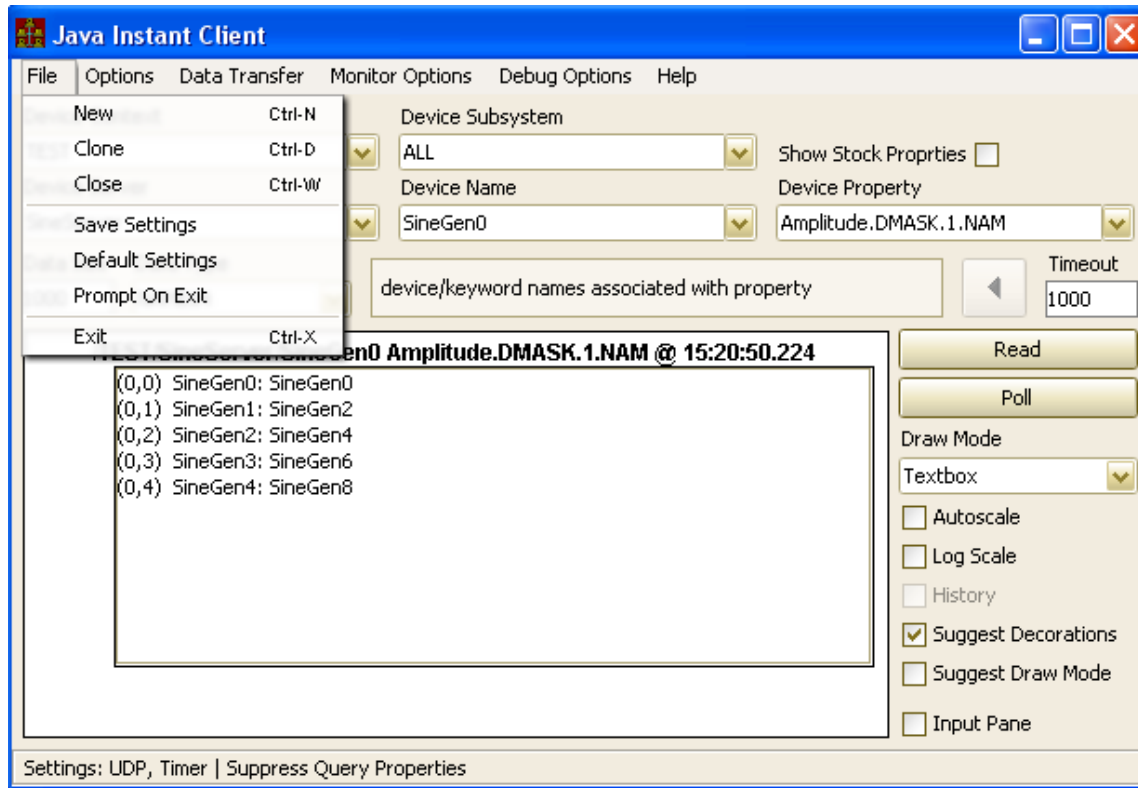
Instant Client News

Calendar Icon for UTC



Instant Client News

■ Save Settings ...

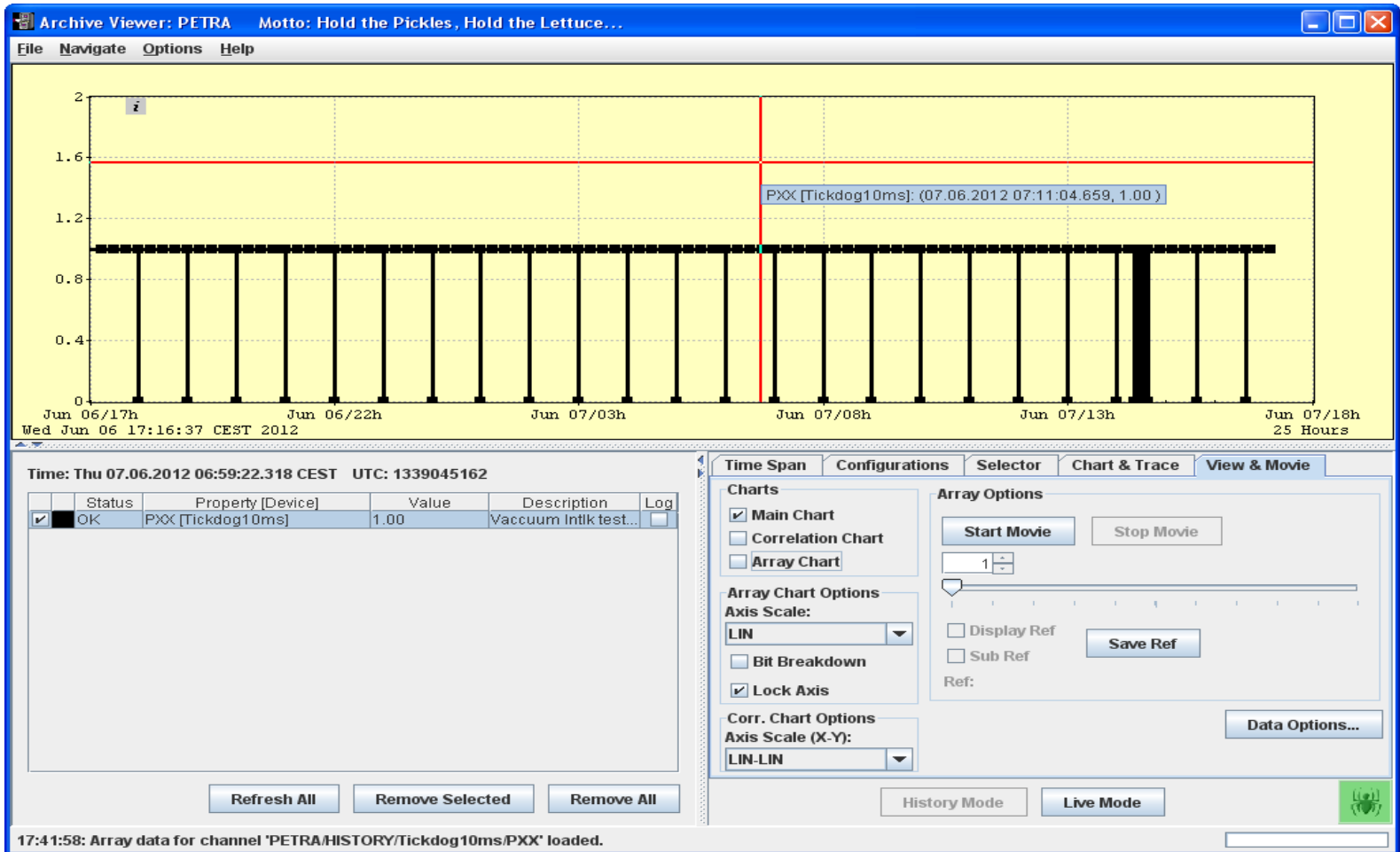


- Suggest Draw Mode
- Suggest Decorations
- Prompt on Exit
- Show Stock Properties

Coming soon:
'show meta-properties' check box

Central Archive

Catching Events



Central Archive

Catching Events

The screenshot displays the 'Archive Viewer: PETRA' software interface. The window title is 'Archive Viewer: PETRA' with the motto 'Motto: Hold the Pickles, Hold the Lettuce...'. The menu bar includes 'File', 'Navigate', 'Options', and 'Help'.

Two graphs are shown side-by-side:

- The left graph shows a signal (black line) that is constant at approximately 1.0 until 54:57.620, then drops sharply to 0 at 54:57.868, and rises back to 1.0 at 54:58.020. A red horizontal line is drawn at approximately 0.15. A vertical red line is at 54:58.420. The x-axis is labeled '1 Seconds'.
- The right graph shows a signal (red line) that is constant at 0 until 14:31:44.974, then spikes to 1.0 at 14:48:51.309. The x-axis is labeled 'BS_0_S_V', 'KR_111_HHL_OK', and 'T_FIL_1_P'.

Below the graphs, the time is shown as 'Time: Thu 07.06.2012 14:54:58.551 CEST UTC: 1339073698'. A table shows the status of the device:

Status	Property [Device]	Value	Description	Log	
<input checked="" type="checkbox"/>	OK	PXX [Tickdog10ms]	1.00	Vacuum Intlk test...	<input type="checkbox"/>

A large yellow box contains the text: 'Data @ 14:54:57.695, 14:54:57.868, 14:54:57.972,'.

At the bottom, there are buttons for 'Refresh All', 'Remove Selected', and 'Remove All'. A 'History Mode' button is also present.

The bottom status bar shows '17:22:26: Devices loaded.'.

[Central Archive]

- Use “*High Resolution Timestamps*”
 - Need the millisecond part !
- *Schedule* at the server
 - CDI Server needs to make use of the ‘*cdisched.csv*’ database and to fix the listener polling rate at a high value
 - Here: @ 10 msec.

[ENS/GENS Synchronization]

- Plug and Play to primary **ENS/GENS**
 - **Multiple attempts !**
 - tries to register for the first *30 seconds* following startup
 - Stop trying on success or non-acceptable error (e.g. address in use).
 - acceptable errors:
 - timeout (ENS wasn't there?)
 - busy (ENS was busy checking something else).
 - **ENS/GENS** forward all requests to 'secondaries'.
 - But there was only 1 attempt !
 - Synchronization '*mostly*' okay, but not perfect !

[ENS/GENS Synchronization]

- Solution:
 - ENS and GENS now both queue a synchronization attempt if not successful
 - retry for up to a minute !