

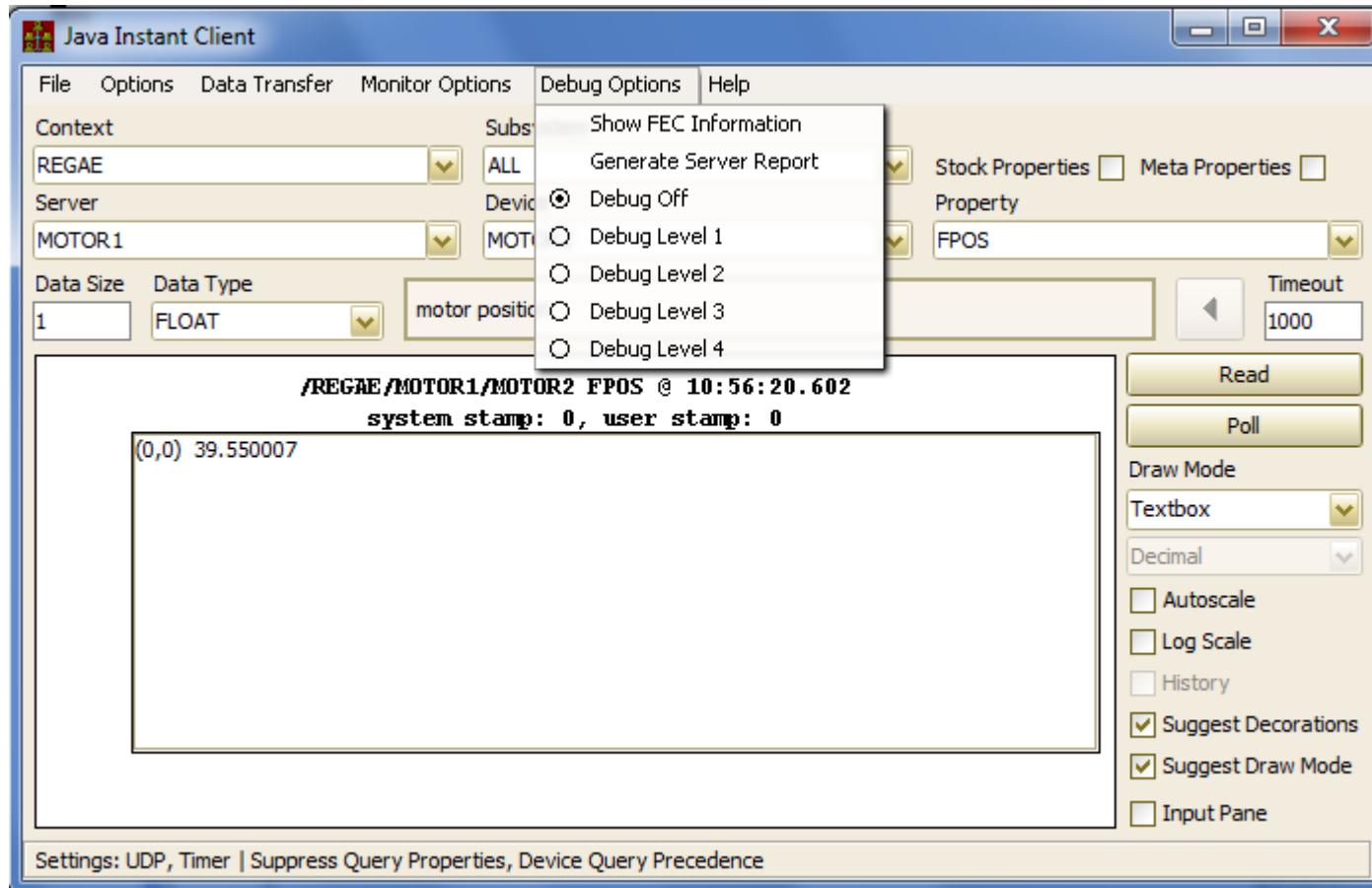
Central Services /
Common Applications

[Common Applications]

- Instant Client News
- Archive Viewer News
- Alarm Viewer News
- FEC Remote Panel News
- ENS Administrator News
- Other Stuff

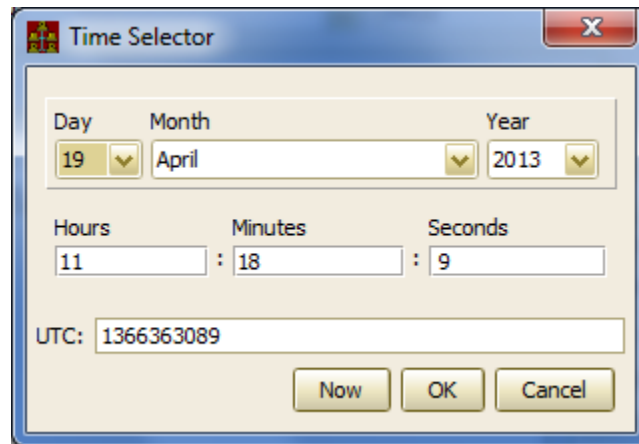
Instant Client News

- Generate Server Report menu item :



[Instant Client News]

- A 'now' button in the Time Selector.

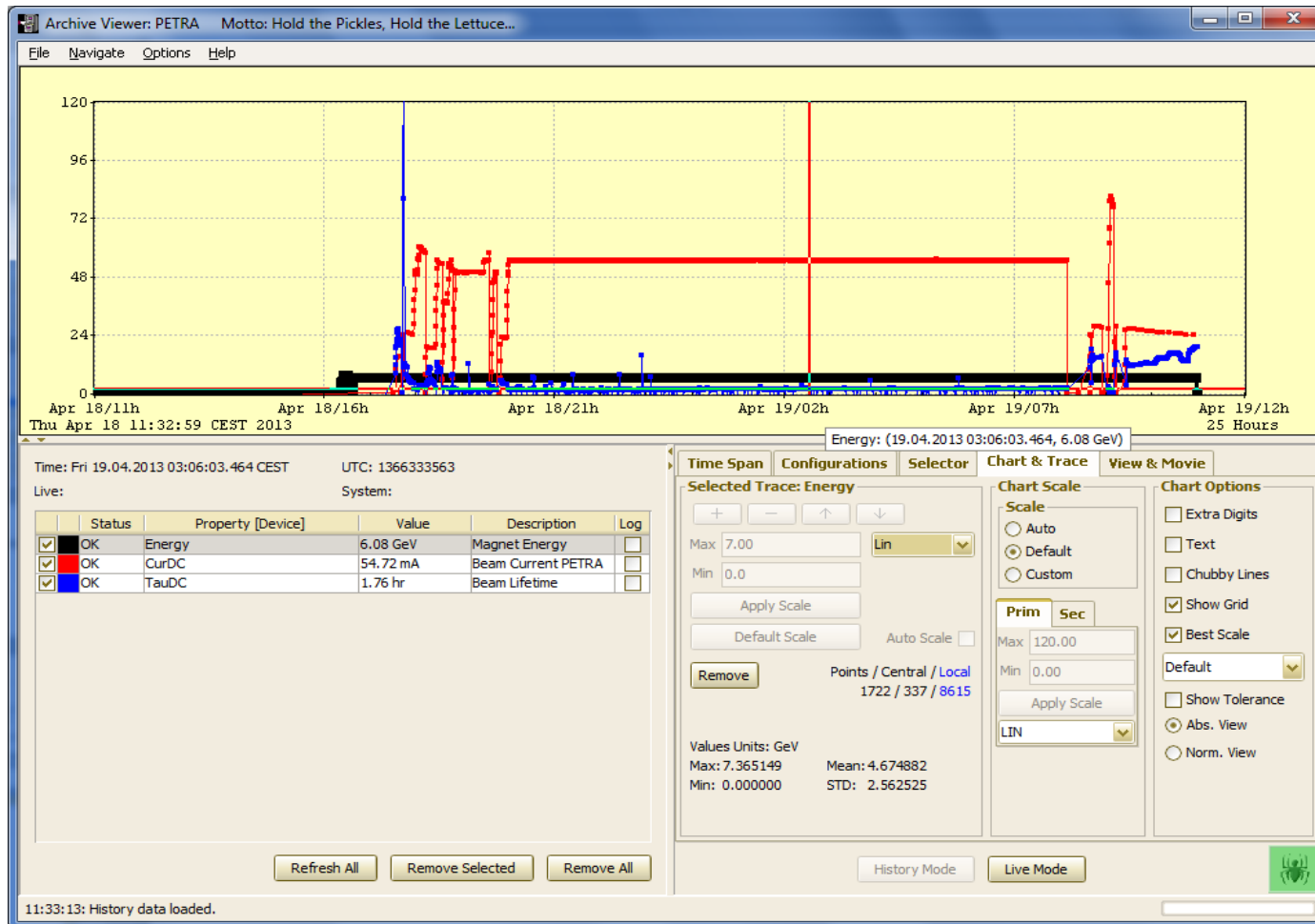


[Archive Viewer]

- html links in annotations
 - Logbook entries as annotations !
 - With url back to the logbook entry
- ‘active’ annotations !
 - some record comment remains valid for some time interval
- launch DAQ Viewer (or any other external viewer) from the Archive Viewer.

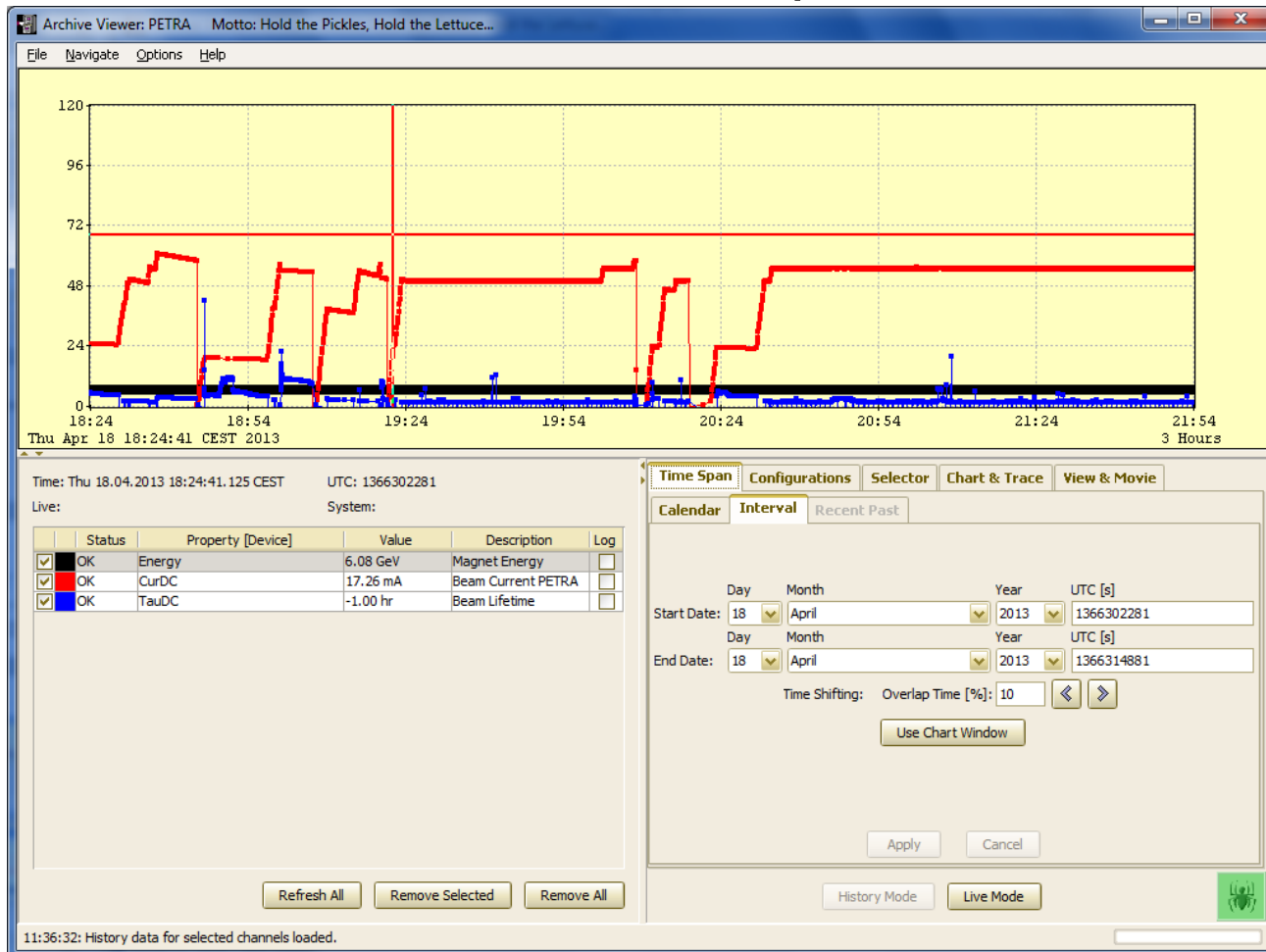
Archive Viewer

■ New look and feel ...



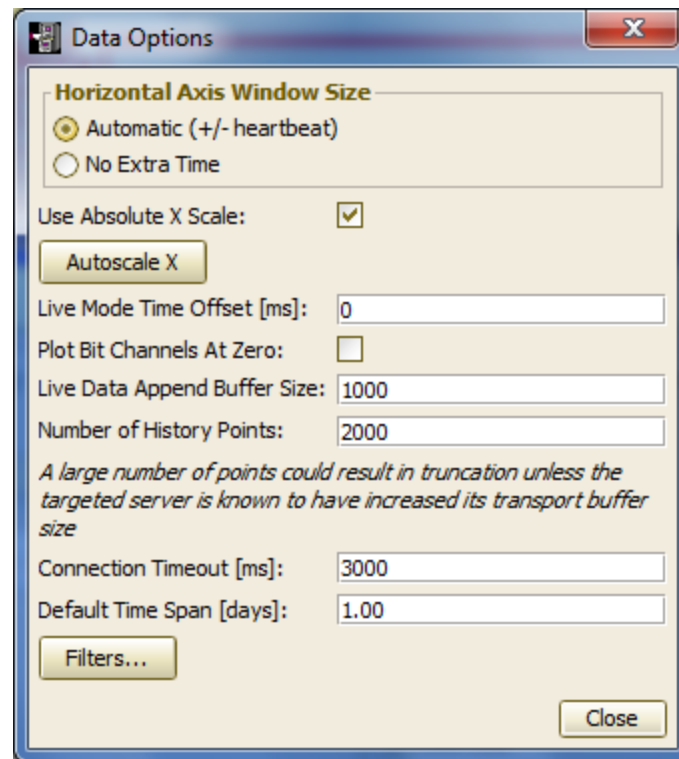
Archive Viewer

- More Time Interval selection possibilities



11:36:32: History data for selected channels loaded.

■ Expanded Data Display options:



[Alarm Viewer]

- Can now disable alarms for
 - Specific devices or
 - All devices
- Can now annotate disabling action !

Alarm Viewer

Alarm Viewer: TEST

File View Options Navigate Help

Context: TEST

Fatal	Error	Warning	Alarm Display		
0	10	9		<input checked="" type="radio"/> Live	<input type="radio"/> Archive

Fri Apr 19 11:46:55 Warning Severity >= 0 Selected/Total No. of Alarms: 19/19 Active Alarms Only (15 Disabled)

System	Fatal	Error	Warning	Alarm Descriptor	Fatal	Error	Warning
Magnet Server	0	0	0	BPM	0	0	0
RF	0	0	0	DOOCS	0	0	0
VAC	1	0	0	SineServers	0	1	2
Temp.Yury	0	0	0	Cu	0	0	0
Temp.Susen	0	0	0	Str	0	2	2
				System	0	7	0
				Hardware	0	0	0
				Services	0	0	0
				Pilotherm	8	0	4

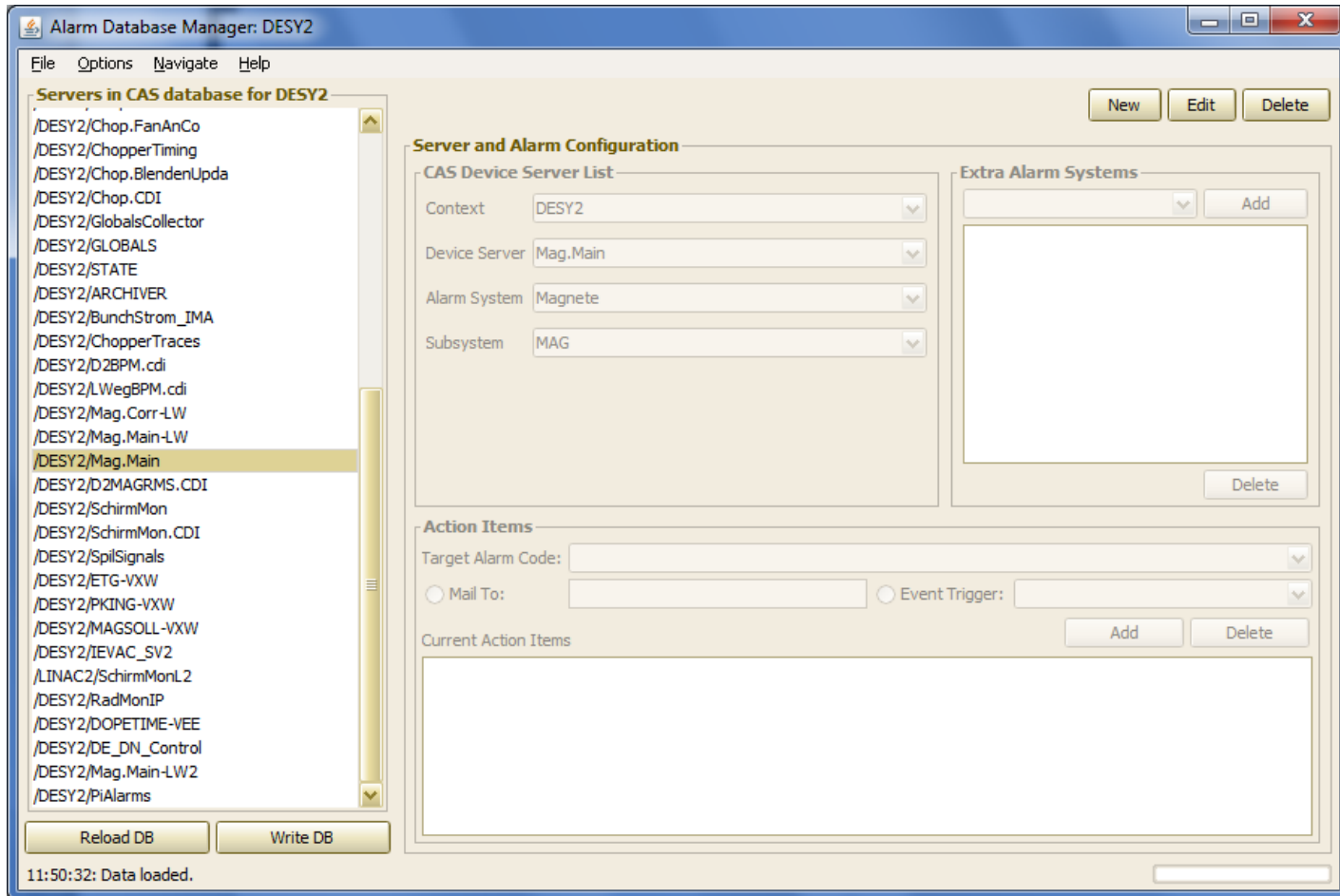
System	Device Name	Alarm Descriptor	Alarm Time	Duration
SineServers	Mag.Group	Not Responding	11:46:54.000 - Apr 19 CEST	23 sec
SineServers	SineGen5	Amplitude too high	11:44:38.791 - Apr 19 CEST	2275.5 hr
SineServers	WinSineServer	Not Responding	11:41:06.000 - Apr 19 CEST	6.1 min

11:46:26: Alarms loaded.

[Alarm Viewer]

Enable	Server	Device Name	Message	Sev	CAS Code	Comment	Caller	Alarm Time
<input type="checkbox"/>	WinSineServer	WinSineServer	Not Responding	12	999	I want to comment the alarms, because I want to see if it really works!	JBOBNAR	15:18:05.000 - Apr 18
<input type="checkbox"/>	Mag.Group	tibican	Not Responding	12	999		JBOBNAR	15:18:05.000 - Apr 18
<input type="checkbox"/>	Mag.Group	all devices	Not Responding	12	999		JBOBNAR	14:54:57.000 - Apr 18

Alarm Database Manager



ENS Administration

■ even more information at your fingertips ...

The screenshot displays the ENS Administration application window. The interface is divided into several sections:

- Administration Panel:** Includes a menu bar (File, Options, Help) and a status bar showing "ENS", "Toggle ENS", "Current ENS: ENS#0", and "Current ENS Address: 131.169.120.41".
- Available Contexts:** A dropdown menu currently set to "FLASH".
- Set FEC Importance:** A dropdown menu set to "IMPORTANT" with a "Set" button.
- Selected FEC Importance:** A dropdown menu also set to "IMPORTANT" with a "Refresh Data" button.
- Servers in Context FLASH:** A list of servers including ALARMSTATE, ARCHIVER, ARCHIVER.RPT, BAM.Server, BAM.Server.CMP, BCM.Server, BCM.Server.CMP, BEAMVALVE, BLM.DataServer, Beam.DataServer, CAS, CAS.ARCHIVE, CYCLER, Cherenkov, DARKC.DAC, DIAG-TIMER, DIAG-DELAY, DIAG-BPM, DIAG-BPM.CMP, DIAG-ADC, DIAG-ADC.CMP, DIPOLE.PILO, DOSEWRMETER, Dump.Temps, EVENTAPC, EVENTS, EVENTSTORE, FECSTATS, FIR.PILO, FlashAlarms, FlashAlarms.cdi, GLOBALS, and LUTRON.
- Registered FECs:** A list of FECs including MODARC.4, MTFDATA.8, PANDORA.1, RADCMTB.5, RADFLASH.2, RADFLASH.6, RADFLASH.7, RADWPRO.6, RadScalersD3.4, RptFIArchive.14, SCOPEHASLAB-LAS, TTFALMSTATE, TTFBEAM, TTFBLM, TTFCASFEC, TTFCYCLER, TTFPECSTATS, TTFGLOBALSRV, TTFHISTORY, TTFMARCH, TTFPMARCH, TTFSTATSRV, TtfCool1, piAlarmsFlashP, piCentFlashP, piFieldBkrFlashP, piFieldFlashFbdP, piFieldFlashLinP, piInfraP, ttPiCopy, and ttlocator. "TTFMARCH" is currently selected.
- Servers for FEC TTFMARCH:** A search box containing "/FLASH/ARCHIVER" and buttons for "Add Server", "Add Alias", and "Remove Server".
- Aliases for Server ARCHIVER:** A search box containing "/TTF2/ARCHIVER".
- Info for Server ARCHIVER:** A table of server details:

Server Online:	<input checked="" type="checkbox"/>
Local Name	DAQEQM
FEC	TTFMARCH
IP Address	192.168.145.200
Port Offset	5
Host Name	accxcimarch4.desy.de
Location	Bldg 30 Rm 502
OS	LINUX
Description	TTF Netmex Data Server
Responsible	P.Duval
Version	4.03.0006
- Group Servers (FLASH):** A list of groups including PiControls, PiPrivateSwitchables, PiPrivateCommands, PiConditions, and PiAlarmsGroup. An "Add Group" button is present.
- Group Members (PiControls):** A list of members including PiPrivCtrls_piCentFlashP [2]. "Add Member" and "Remove Member" buttons are present.

At the bottom of the window, a status bar reads: "11:41:47: Server aliases loaded for FLASH/ARCHIVER."

FEC Administration

- bigger, faster, stronger ...

Server and FEC Remote Control Panel for TTF2

File View Tools Help

ADCDMA	BWS_TTF3	LLRF.ADC.45	TOROID
ALARM_SERVER	CAM.GUNAREA	LLRF.ADC.67	TOROID1
ARCHIVER	CAM.LOLA	LLRF.CONTROLLER	TOROID2
AUX_PARAMETER	CAS	LLRF.CONTROLLER.1	TOROID3
BCM	CHR2SRV	LLRF.CONTROLLER.23	Toroids
BEAMPROFILE	CYCLE	LLRF.CONTROLLER.45	TORIDX
BIS	DAQ.SERVER3	LLRF.CONTROLLER.67	TTF.BLM.HLC
BLM	DIPOLE	LLRF.CONTROLLER....	TTF.BWS1
BLM.1	DIPOLE.PILO	LOLA.CONTROL	TTF.BWS2
BLM.2	DOSEPRMETER	LONGARCHIVER	TTF.BWS3
BLM.3	DUMP.TEMP	LONGARCHIVER.2	TTF.CANA
BLM.21941	EMITMEAS	LUVA_INERTLOCK	TTFCANB
BLM.ALARM	ENERGY.DOGLEG	LUVA_INTERLOCK	TTFCANC
BLM.CLOCK	ESDADIO	MAIN	TTFCAND
BLM.CLOCK	EXP2.MAGNXX.ML	MAIN_PARAMETER	TTFCANE
BLM.HV	FIR.PILO	MTS.EVENTBUILDER	TTFCANF
BLM1	HISTORY	OPTIC	TTFMAG
BLM3	IPTIMER	ORBIT	TTFMAG.GROUP
BLM	LLRF.ADC	DEPSTAT	TTFMAG.OCHST

Ping all Active: 126 of 145 (10:21:13)

Summary: Servers in TTF2

Context: TTF2 FEC Importance: ALL

Selected Subsystems

<input checked="" type="checkbox"/> DIAG	<input checked="" type="checkbox"/> UTIL	<input checked="" type="checkbox"/> DAQ	<input checked="" type="checkbox"/> CRYO
<input checked="" type="checkbox"/> SYSTEM	<input checked="" type="checkbox"/> RF	<input checked="" type="checkbox"/> EXP	<input checked="" type="checkbox"/> INSTR
<input checked="" type="checkbox"/> SER	<input checked="" type="checkbox"/> MAG	<input checked="" type="checkbox"/> VAC	<input checked="" type="checkbox"/> HIST

ALL NONE

OS Color Code: Dos Unix VxWorks VMS Win16 Win32 Java

Selected FEC: bws_ttf3
Selected Server [Local Name - on FEC]: BWS_TTF3 [BWSEQM]
Subsystem: DIAG
Version: 4.02.0008
OS: VXWORKS
Address: 131.169.149.201
Host Computer: bws_ttf3.desy.de
Responsible: M.Werner(2486)
Description: Wirescanner crate 3 for TTF
Location: SER
Importance: ALL

Servers on FEC bws_ttf3
BWS_TTF3 [BWSEQM]
TTF.BWS3 [DCSEQM]

Ping Control Restart Report

Control & Restart

Log File	Stats	Histories	Commands	Settings	IC
Activity		Contracts	Clients	Alarms	
Refresh					
Wed Jul 25 14:26:41 CEST 2012: PMT_VOLTAGE_SOLL[#0] set by Fa83a99376.244 from 131.1					
Wed Jul 25 14:26:41 CEST 2012: PMT_VOLTAGE_SOLL[#0] set by Fa83a99376.244 from 131.1					
Wed Jul 25 14:26:40 CEST 2012: PMT_VOLTAGE_SOLL[#0] set by Fa83a99376.244 from 131.1					
Wed Jul 25 14:26:37 CEST 2012: CHANNEL[#0] set by Fa83a99376.244 from 131.169.147.118					
Wed Jul 25 14:26:37 CEST 2012: PMT_CURRENT_LIM[#0] set by Fa83a99376.244 from 131.16					
Wed Jul 25 14:26:28 CEST 2012: PMT_VOLTAGE_SOLL[#0] set by Fa83a99376.244 from 131.1					
Wed Jul 25 14:26:27 CEST 2012: PMT_VOLTAGE_SOLL[#0] set by Fa83a99376.244 from 131.1					
Wed Jul 25 14:26:26 CEST 2012: PMT_VOLTAGE_SOLL[#0] set by Fa83a99376.244 from 131.1					
Wed Jul 25 14:26:25 CEST 2012: PMT_VOLTAGE_SOLL[#0] set by Fa83a99376.244 from 131.1					
Wed Jul 25 14:26:25 CEST 2012: PMT_VOLTAGE_SOLL[#0] set by Fa83a99376.244 from 131.1					
Wed Jul 25 14:26:22 CEST 2012: PMT_VOLTAGE_SOLL[#0] set by Fa83a99376.244 from 131.1					
Wed Jul 25 14:26:21 CEST 2012: PMT_VOLTAGE_SOLL[#0] set by Fa83a99376.244 from 131.1					
Wed Jul 25 14:25:31 CEST 2012: SLOW_MOVE[#0] set by Fa83a99376.244 from 131.169.147.					
Wed Jul 25 14:23:30 CEST 2012: SLOW_MOVE[#0] set by Fa83a99376.244 from 131.169.147.					
Wed Jul 25 14:22:25 CEST 2012: CHANNEL[#0] set by Fa83a99376.244 from 131.169.147.118					
Wed Jul 25 14:22:25 CEST 2012: PMT_CURRENT_LIM[#0] set by Fa83a99376.244 from 131.16					

10:21:41: Normal

[Other Stuff]

- DOOCS/TINE configurator
- Attachfec in java (launched from FEC Remote panel)
- Process Watchdogs ...