



TINE Release 4.0 News

(April 19, 2013: That was the month that was !)

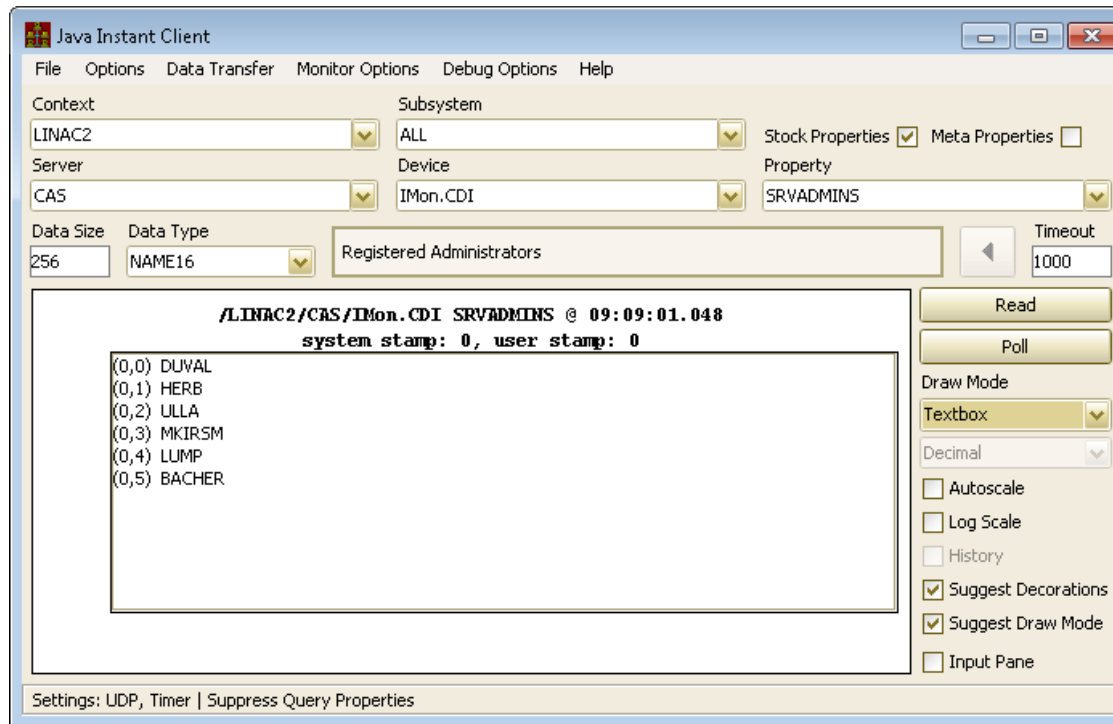
“What a long, strange trip it’s been”

[Release 4.3.6]

- Notable Embellishments/Bug fixes
 - C-Lib: `srvlog()`
 - `int srvlog(char *filename, char *tag, char *text, ...)`
 - (create and) write to a log file of your choice.
 - `SetAlarm()`
 - Alarms not set if device is marked 'off-line'
 - See Stock property "DEVONLINE" and device configuration.
 - Globals
 - `Keyword + context` can now be sent and received
 - Previously: context was determined by the context of the globals server.
 - BUT: /LINAC2/CYCLER sends globals in context
 - LINAC2, DESY2, PETRA, REGAE

Release 4.3.6

- Stock property “SRVADMINS”
 - Lists users with ‘administrative rights’.
 - Central services ...



[Release 4.3.6]

- New contract coercion:
 - Fix a contract's output
 - Apply access `CA_FORCEOUTPUT` to the property registration
 - Callers are *coerced* to use the registered data type and size!
 - Issue:
 - Property delivers 100 float values
 - Caller asks for 1000 double values
 - Server converts float values to double values and returns only 100 values
 - BUT server is possibly servicing multiple contracts for essentially the same thing!
 - Can become an issue for large payloads (video frames).
 - *Make all callers ask for the same data the same way!*

[Release 4.3.6]

- Forced output coercion (continued):
 - length requested \neq length registered OR format requested \neq format registered
 - Return `'invalid_datarequest'` and send proper length and format to caller.
 - Currently:
 - Length requested $>$ length registered
 - Coerce the contract and continue (caller doesn't notice)
 - Caller's buffer is okay to use
 - Length requested $<$ length registered OR format \neq format registered
 - Caller received the error code
 - Caller's buffer NOT okay to use
 - Planned:
 - Always coerce, but buffer incoming data separately and convert at the client

[Release 4.3.6]

- Pass 'real' micro-seconds in data timestamps
 - was truncating to *milli*-seconds
 - both client and server (and has been since release 2.0 in the '90s)
 - Globals timestamps still pass milliseconds
 - Update to microseconds during long shutdown.

[Release 4.3.6]

- Theater of the bizarre
 - TINE time synchronization, [VxWorks](#) and [ntp](#).
 - TINE time synchronization designed to adjust data timestamps (not the clock) to the '100' msec level.
 - Must see the 'same correction' *5 times in a row* ! (slope of an active ntp correction taken into account).
 - Usually applicable at the level of seconds or maybe minutes (some windows machines)
 - Linux machines with ntp are generally very well synchronized
 - *VxWorks boot starts at 0* (Jan 1, 1970)

[Release 4.3.6]

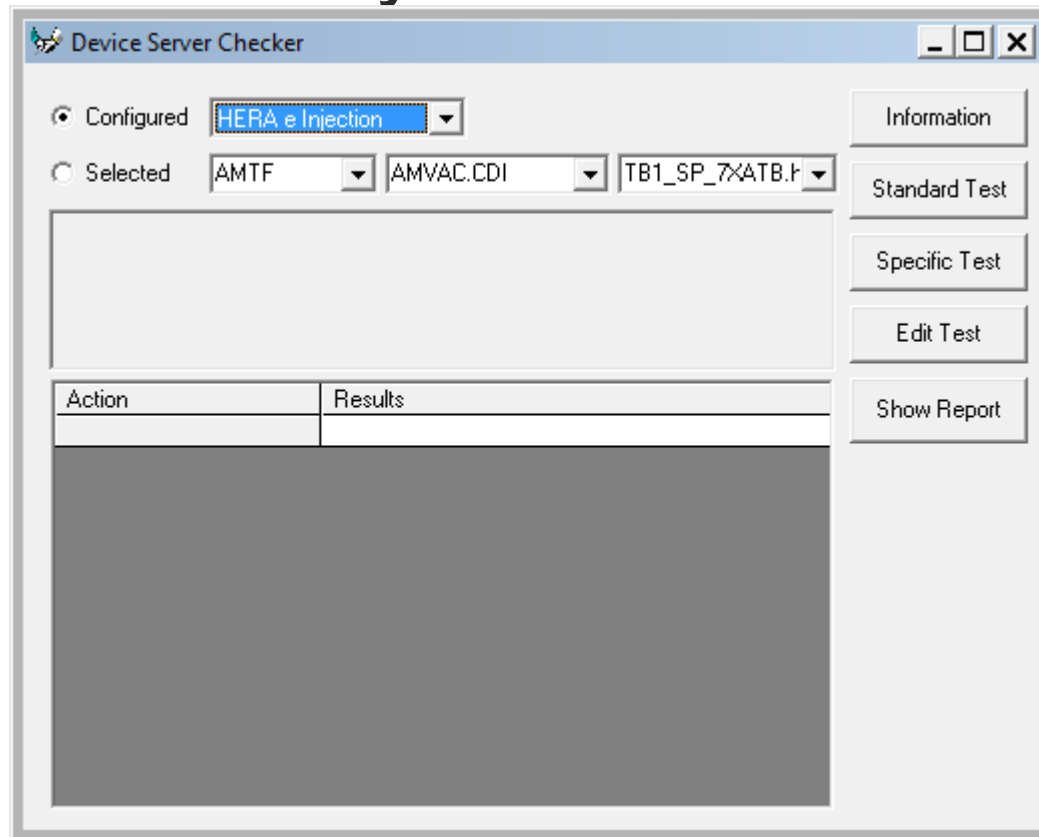
- VxWorks
 - Post release 4.2.8
 - makes a single call to the TINE time server at start time and sets the clock to the value received.
 - applies the time synchronization as needed (if it receives the multicast).
 - Recent usage of ntp task on VxWorks
 - Led to a 'correction' of -268435456 (!?!)
 - => 1938
 - Caused missed cycles and other chaos.
 - Disable the extra time synchronization for VxWorks servers using ntp !

[Release 4.3.6]

- Server self tests
 - Stock property '**SRVSELFTEST**' available since release 3.0
 - Reads and returns ascii contents of a file called '**selftest.csv**'
 - As of 4.3.6 will also look for '**selftest.xml**' if the '.csv' variety is not available.
 - Stock property does nothing else. It's just a long text string.

[Release 4.3.6]

- In the old days ...



[Release 4.3.6]

- Self checking : the next generation
 - Server gives instructions (steps) on how to best 'test me'.
 - Need to consider (some subset) of machine states
 - off
 - running_idle
 - running_studies
 - running_user
 - running = (running_idle|running_studies|running_user)
 - And other permissions
 - beam_permission

[Release 4.3.6]

- Self checking : the next generation
 - Really is 'just a spread sheet'
 - Don't 'xml' this !
 - Example of testing a motor server:

Property	Device	SizeOut	FormatOut	DataTgt	DataMask	SizeIn	FormatIn	DataIn	TimeOut	Wait	Access	Tolerance	Required
Position	Motor1	1	double	\$1		0	NULL		0.5		READ		
Move.START	Motor1	0	NULL			1		0 double	\$1+1.0	0.5	WRITE		!running
Move.STATUS	Motor1	1	int32	0	0xfffe	0	NULL		1	5	MONITOR	0	!running
Move.START	Motor1	0	NULL			1	double	\$1-1.0	0.5		WRITE		!tunning
Move.STATUS	Motor1	1	int32	0	0xfffe	0	NULL		1	5	MONITOR	0	!rUnning

[Release 4.3.6]

- Other important checking :
 - The 'Server Report' !
 - See the new central service features !

[Release 4.3.6]

- Epics2Tine news
 - The alarm mapping now works !
- Doocs2Tine news
 - Initial tests of multi-channel mapping in a doocs server were successful !
 - Doocs server notes which 'locations' offer the same (scalar) property and
 - register a 'group device'
 - register each device as an element of this group
 - participate in MCA coercion ...

[Release 4.3.6]

Now on to **TINE STUDIO** ...