

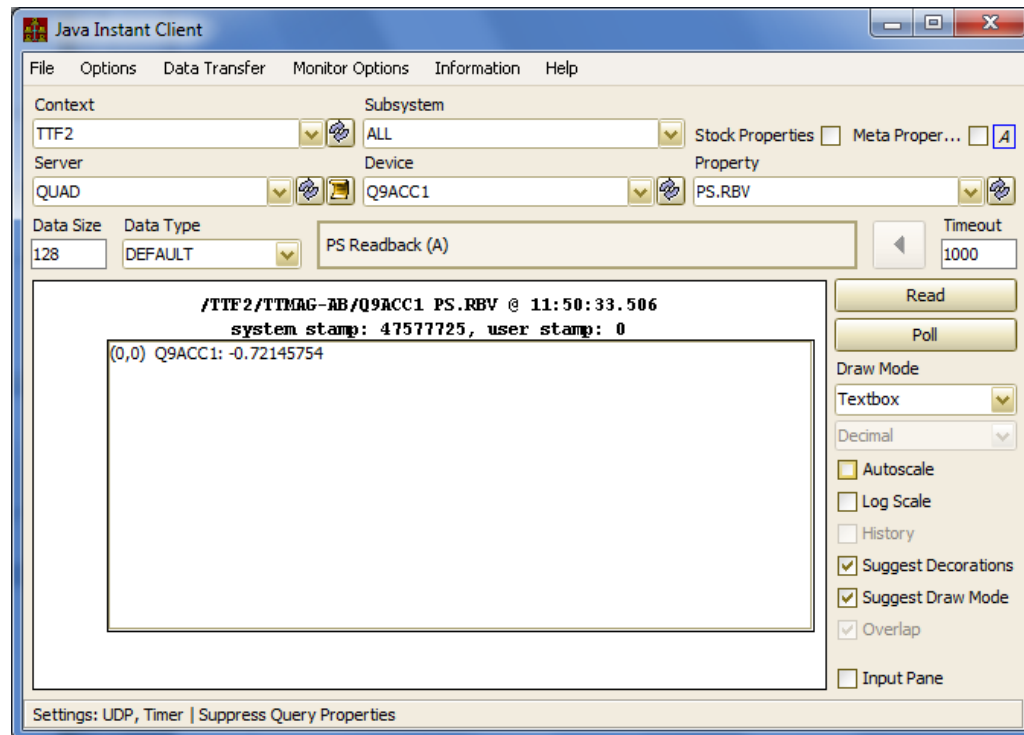
TINE Studio News

June 8, 2015

Instant Client

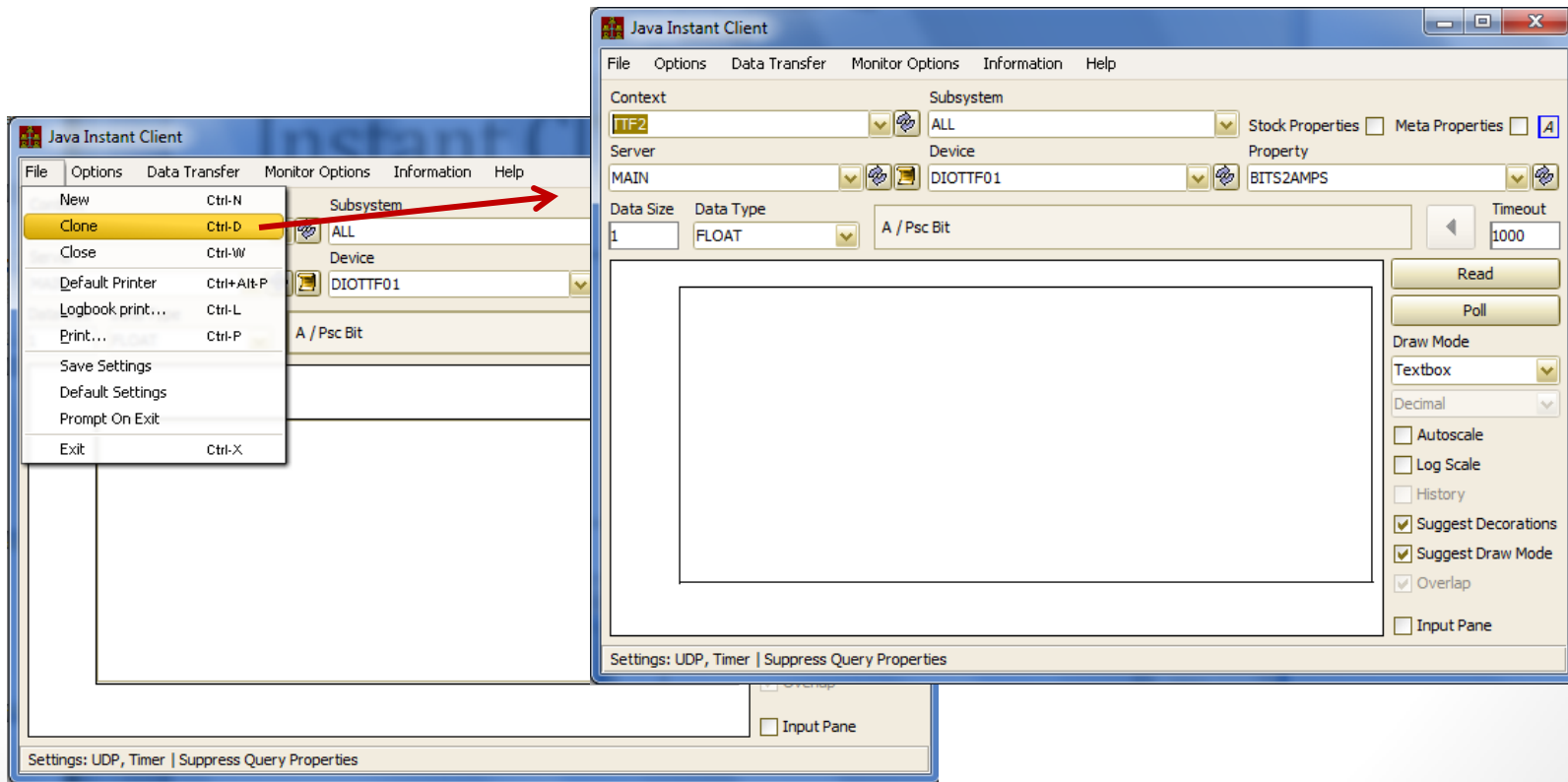
- It can do everything and now even more!
- 'DEFAULT' datatype included for testing the server response when a client (think: jddd) uses this data type:

Select 'DEFAULT'
in the Data Type
combo box ...



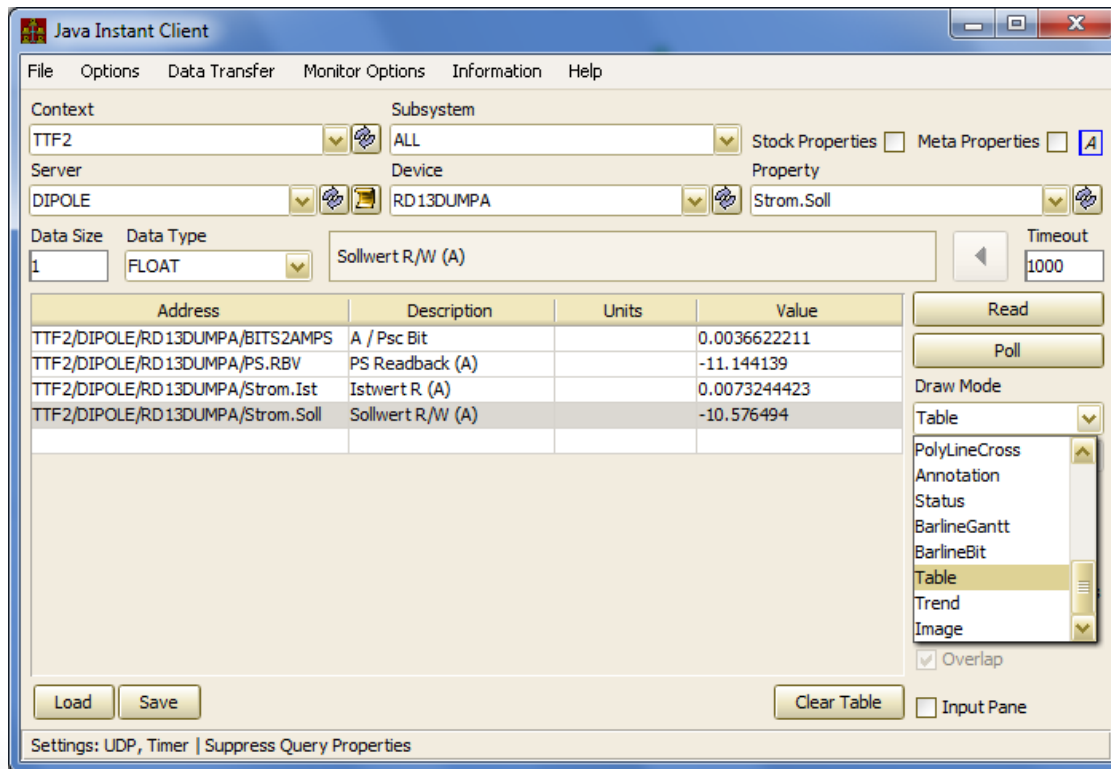
Instant Client

- It can do everything and now even more!
- We all know about 'cloning' (don't we?):



Instant Client

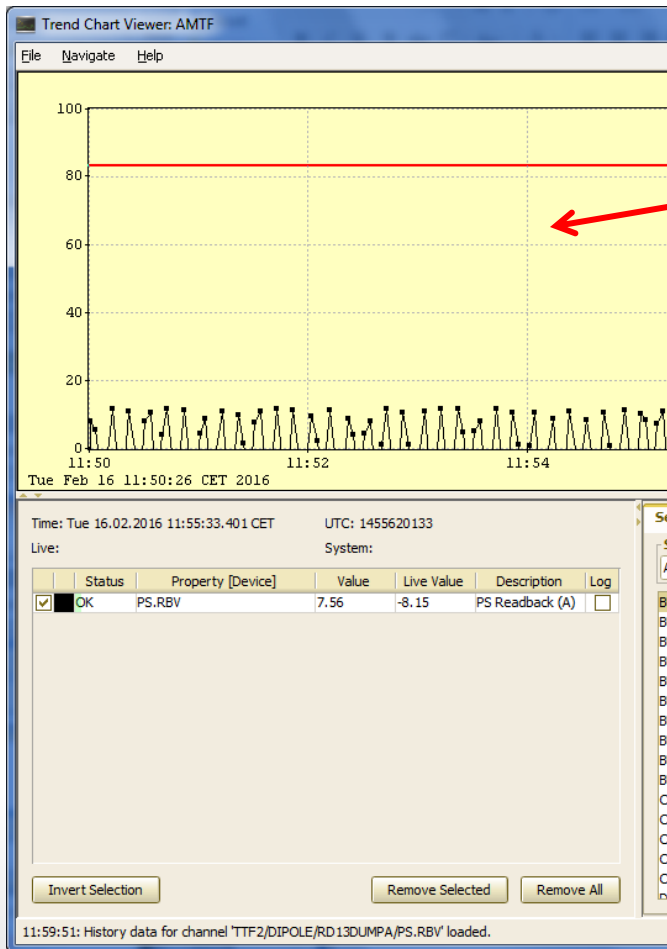
- It can do everything and now even more!
- A sometimes 'better way' to access multiple properties and/or multiple servers ...



Select 'Table' in the Draw Mode combo box ...

Instant Client

- A 'drag-and-drop' icon refers to the currently browsed to address:



Java Instant Client

File Options Data Transfer Monitor Options Information Help

Context: TTF2 (Subsystem: ALL) Stock Properties Meta Properties [A]

Server: DIPOLE (Device: RD13DUMPA) Property: PS.RBV

Data Size: 1 Data Type: FLOAT PS Readback (A) Timeout: 1000

Read Poll

Draw Mode: Textbox Decimal Autoscale Log Scale History Suggest Decorations Suggest Draw Mode Overlap Input Pane

/TTF2/TTMAG-EF/RD13DUMPA PS.RBV @ 11:59:47.151
system stamp: 47583264, user stamp: 0

(0,0) RD13DUMPA: 9.320353

Settings: UDP, Timer | Suppress Query Properties

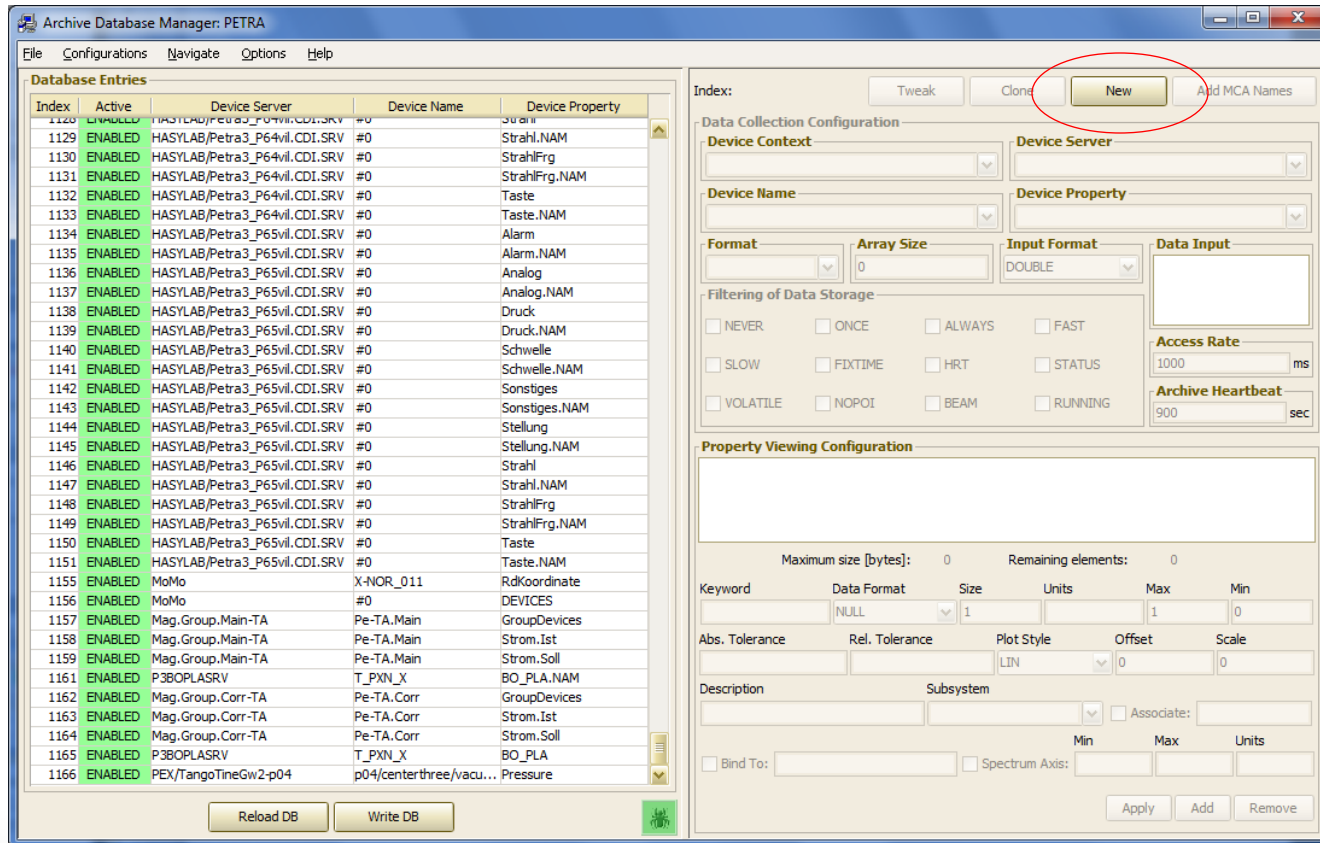
BUSADDR
BUSDEVICES
BUSDEVICES.NAM
BUSERRORS
BUSNAME
BUSNAMES
BUSSCAN
BUSSCAN.NAM
BUSTYPE
BUSTYPES
CDIADDR.DB
CDIMF.DB
CDISCHED.DB
CDISERV.DB
CDIVERSTION

Device Name: []
Selected Bit: []
Polling Rate: 1000

Add Selected Add All
Add Devices Add Subdevices

Archive Database Manager

- Coming soon: an ‘access lock’
- The number of central archiver ‘admins’ is growing exponentially ...
- The probability that two admins attempt to edit the same context’s database concurrently is not only non-negligible, it has happened!



Most TINE Studio Applications

- Help ...

Archive Database Manager: PETRA

File Configurations Navigate Options Help

Database Entries

Index	Active	Device Server	Device Name	Device
1120	ENABLED	HASYLAB/Petra3_P64vil.CDI.SRV	#0	Strahl
1129	ENABLED	HASYLAB/Petra3_P64vil.CDI.SRV	#0	Strahl.NAN
1130	ENABLED	HASYLAB/Petra3_P64vil.CDI.SRV	#0	StrahlFrg
1131	ENABLED	HASYLAB/Petra3_P64vil.CDI.SRV	#0	StrahlFrg.I
1132	ENABLED	HASYLAB/Petra3_P64vil.CDI.SRV	#0	Taste
1133	ENABLED	HASYLAB/Petra3_P64vil.CDI.SRV	#0	Taste.NAM
1134	ENABLED	HASYLAB/Petra3_P65vil.CDI.SRV	#0	Alarm
1135	ENABLED	HASYLAB/Petra3_P65vil.CDI.SRV	#0	Alarm.NAM
1136	ENABLED	HASYLAB/Petra3_P65vil.CDI.SRV	#0	Analog
1137	ENABLED	HASYLAB/Petra3_P65vil.CDI.SRV	#0	Analog.NA
1138	ENABLED	HASYLAB/Petra3_P65vil.CDI.SRV	#0	Druck
1139	ENABLED	HASYLAB/Petra3_P65vil.CDI.SRV	#0	Druck.NAM
1140	ENABLED	HASYLAB/Petra3_P65vil.CDI.SRV	#0	Schwelle
1141	ENABLED	HASYLAB/Petra3_P65vil.CDI.SRV	#0	Schwelle.
1142	ENABLED	HASYLAB/Petra3_P65vil.CDI.SRV	#0	Sonstiges
1143	ENABLED	HASYLAB/Petra3_P65vil.CDI.SRV	#0	Sonstiges.
1144	ENABLED	HASYLAB/Petra3_P65vil.CDI.SRV	#0	Stellung
1145	ENABLED	HASYLAB/Petra3_P65vil.CDI.SRV	#0	Stellung.N
1146	ENABLED	HASYLAB/Petra3_P65vil.CDI.SRV	#0	Strahl
1147	ENABLED	HASYLAB/Petra3_P65vil.CDI.SRV	#0	Strahl.NAN
1148	ENABLED	HASYLAB/Petra3_P65vil.CDI.SRV	#0	StrahlFrg
1149	ENABLED	HASYLAB/Petra3_P65vil.CDI.SRV	#0	StrahlFrg.I
1150	ENABLED	HASYLAB/Petra3_P65vil.CDI.SRV	#0	Taste
1151	ENABLED	HASYLAB/Petra3_P65vil.CDI.SRV	#0	Taste.NAM
1155	ENABLED	MoMo	X-NOR_011	RdKoordin
1156	ENABLED	MoMo	#0	DEVICES
1157	ENABLED	Mag.Group.Main-TA	Pe-TA.Main	GroupDevi
1158	ENABLED	Mag.Group.Main-TA	Pe-TA.Main	Strom.Ist
1159	ENABLED	Mag.Group.Main-TA	Pe-TA.Main	Strom.Soll
1161	ENABLED	P3BOPLASRV	T_PXN_X	BO_PLA.N
1162	ENABLED	Mag.Group.Corr-TA	Pe-TA.Corr	GroupDevi
1163	ENABLED	Mag.Group.Corr-TA	Pe-TA.Corr	Strom.Ist
1164	ENABLED	Mag.Group.Corr-TA	Pe-TA.Corr	Strom.Soll
1165	ENABLED	P3BOPLASRV	T_PXN_X	BO_PLA
1166	ENABLED	PEX/TangoTineGw2-p04	p04/centerthree/vacu...	Pressure

Reload DB Write DB

Apply Add Remove

Help

- About

http://adweb.desy.de/mcs/tine/TineDemos.html#studioADBViewer

File Edit View Favorites Tools Help

- How to find out which alarms have been disabled
- How to disable specific alarms
- How to analyze the alarms in a subsystem
- How to filter out alarms from the alarm list

Central Service Viewers

- Multi-Channel Analyzer (full demo: 16 minutes)
- Scope Trace Viewer (full demo: ~8 minutes)
- Alarm Viewer (full demo: ~10 minutes)
- Operation/Availability Viewer (full demo: ~3 minutes)

General Purpose Viewers

- TINE Instant Client (full demo: ~18 minutes)
- Acop Video Bean (full demo: ~8 minutes)

Administrative Viewers

- FEC Remote Control Panel (full demo: ~7 minutes)

Archive Database Manager

- Archive Database Manager (full demo: ~6 minutes)
- How to add a simple scalar keyword
- How to add a Multi-Channel keyword
- How to add two Multi-Channel keywords to a single target
- How to tweak a keyword
- How to add Multi-Channel keywords with a common name list
- How to add a Multi-Channel keyword from a doocs server
- How to add a spectrum keyword
- How to remove a keyword
- How to clone a keyword

TINE Watchdog

- **New Features**
 - Monitors network activity.
 - Adjustable settings exposed in the GUI
 - Local history popups

TINE Watchdog GUI

- Those fields not greyed can be edited ...
- Three network interfaces found: local, eth1 and eth0

The screenshot shows the TINE Watchdog GUI with the following details:

Context: SERVICE
Server: WD_acdxciens1
 Buttons: Reload, Watchdog Subsystem Only (checked)

Selected Watchdog Server

Total CPU Usage: 6 % Watchdog CPU: 0 %
 Available Memory: 303.99 MB Watchdog Memory: 12.88671875 MB
 Remaining Time: 0 s
 Buttons: Reload, Reboot

Network Load [kB/s]: 0.59 0.00 20.59
 Network Load [%]: 4.83E-04 -0.00 0.17

Process	io: 0.07421875	eth1: 0.0	eth0: 21.484375	MB	Starts	Stops	Status	Tine Status
UDPPING				12 MB	0	0		(no monitoring link configured)
ENS	0 %	24.85 MB	0	0	0	0		success
GLOBALSFEC	0 %	17.20 MB	0	0	0	0		(no monitoring link configured)
TIMSERV	0 %	13.12 MB	0	0	0	0		(no monitoring link configured)
GENS	0 %	128.60 MB	3	0	0	0		(no monitoring link configured)
EVENTS	0 %	14.21 MB	0	0	0	0		(no monitoring link configured)

Process: ENS

CPU Violations: 0 Last Start Retry: 16:24:23 11. Feb Last TINE Response: 12:15:38 16. Feb
 Memory Violations: 0 Current Retry: 0 Last TINE Retry: 16:24:30 11. Feb

Buttons: Start, Stop, Restart, Start Polling, Stop Polling

Setting	Value	Setting	Value
Alias	ENS	Pause N Seconds After Start	1 s
Process Name	ens	Number of Retries	5
Is Service	false	Retry Interval	10 s
Path	/export/tine/server/ens/bin/ens	Autostart	YES
Startup Parameters		Max CPU Load	90 %
Match Parameters	true	No. of Allowed CPU Violations	5
Match Path	true	Max Memory	1000.0 MB
Working Directory	/export/tine/server/ens/bin	No. of Allowed Memory Violations	3
Console Caption		TINE Property	/SITE/ENS 1/#0/NSERVERS
Preceding Processes		Polling Rate	1000 ms
Environment Variables		Timeout	10 s
Monitor N Seconds After Start	5 s	Timeout Restart	20 s

TINE Watchdog GUI

- Those fields not greyed can be edited ...
- Three network interfaces found: local, eth1 and eth0

The screenshot displays the TINE Watchdog GUI with two main windows: 'Watchdog' and 'Memory'.

Watchdog Window:

- Context:** SERVICE
- Server:** WD_acdxciens1
- Selected Watchdog Server:**
 - Total CPU Usage: 6 %
 - Watchdog CPU: 0 %
 - Available Memory: 303.99 MB
 - Watchdog Memory: 12.88671875 MB
 - Network Load [kB/s]: 0.07
 - Network Load [%]: 6.08E-05
- Process Table:**

Process	CPU	Memory	Starts	Stops
UDPPING	0 %	2.12 MB	0	0
ENS	0 %	24.12 MB	0	0
GLOBALSFEC	0 %	17.12 MB	0	0
TIMSERV	0 %	13.12 MB	0	0
GENS	0 %	128.60 MB	3	0
EVENTS	0 %	14.21 MB	0	0

Process: ENS

CPU Violations: 0 Last Start Retry: 16:22
Memory Violations: 0 Current Retry: 0

Buttons: Start, Stop, Res

Settings Table:

Setting	Value
Alias	ENS
Process Name	ens
Is Service	false
Path	/export/tine/server/ens/bin/ens
Startup Parameters	
Match Parameters	true
Match Path	true
Working Directory	/export/tine/server/ens/bin
Console Caption	
Preceding Processes	
Environment Variables	
Monitor N Seconds After Start	5 s

Memory Window:

Graph showing Memory [MB] over time (Feb 09 to Feb 16). The Y-axis ranges from 0 to 180 MB. The X-axis shows dates from Feb 09 to Feb 16, 7 Days.

Legend (Process):

- UDPPING
- LOCCLN
- ENS
- GLOBALSFEC
- SITECASFEC
- TIMSERV
- GENS
- CLOGFEC
- EVENTS

Time Window:
 Last Hour
 Last 8 Hours
 Last Day
 Last Week
 Last Month

Vertical Scale:
 Default Scale
 Auto Scale