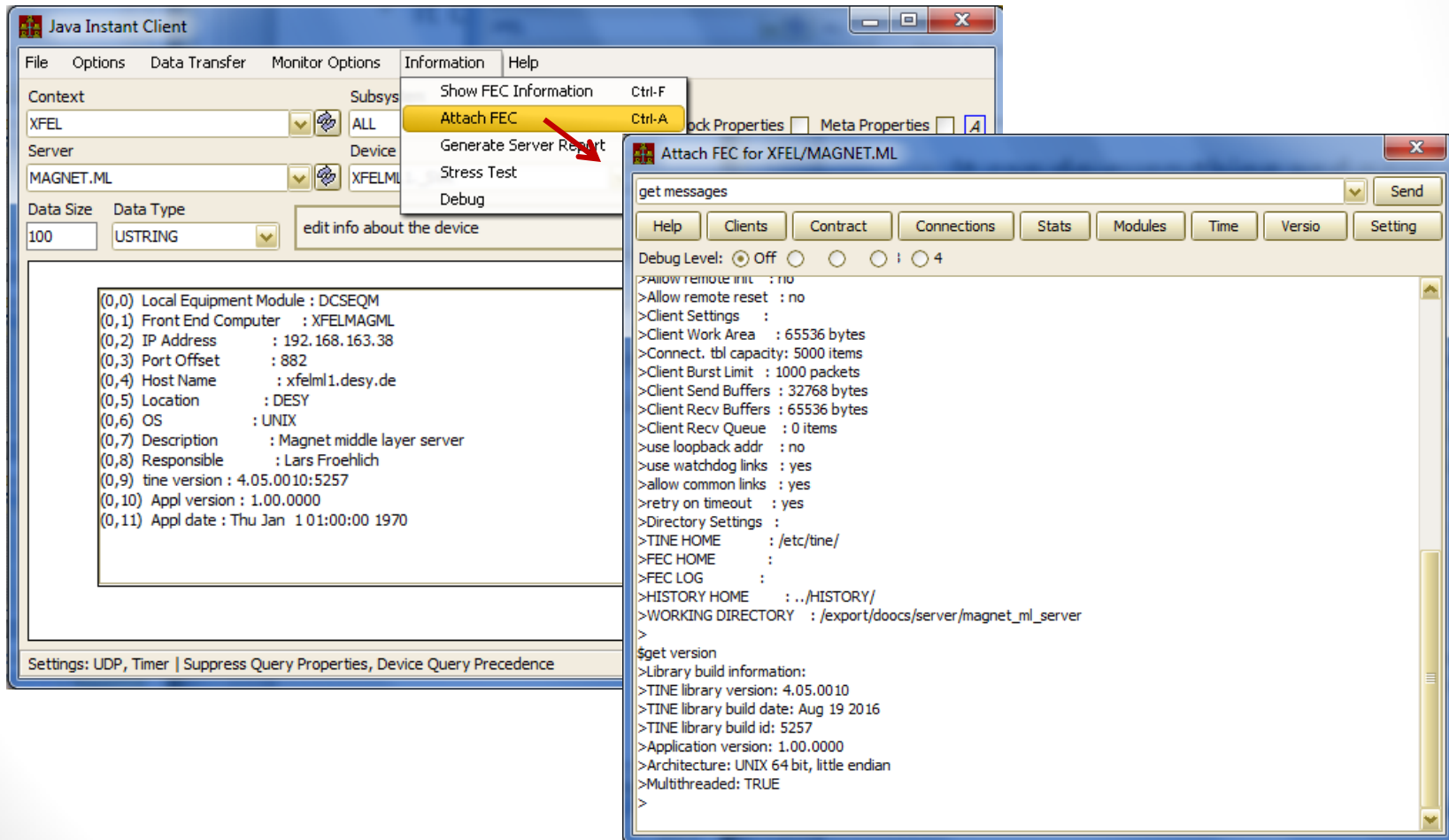


TINE Studio News

Sept. 14, 2016

Instant Client

- It can do everything and now even more!
- Launch 'attachfec' from the instant client:



Archive Request Form

The screenshot shows the 'Central Archive Request Form' window. It features several input fields and a 'Drop Area' on the right. The 'Context' is set to 'XFEL' and 'Subsystem' to 'ALL'. The 'Server' is 'MAGNET.ML' and 'Device' is 'SOLA.23.I1'. The 'Property' dropdown is open, showing a list of options with 'FIELD.RBV' selected. A tooltip 'Selected Property' points to this selection. The 'Drop Area' contains two entries: 'XFEL/MAGNET.ML/SOLA.23.I1[KICK.RBV]' and 'XFEL/MAGNET.ML/SOLA.23.I1[FIELD.RBV]'. At the bottom, there are 'Add', 'Remove', and 'Send Request' buttons. The 'Send Request' button is circled in red.

Central Archive Request Form

Context: XFEL
Subsystem: ALL

Server: MAGNET.ML
Device: SOLA.23.I1

Property: FIELD.RBV

Drop Area:
XFEL/MAGNET.ML/SOLA.23.I1[KICK.RBV]
XFEL/MAGNET.ML/SOLA.23.I1[FIELD.RBV]

Selected Property: FIELD.RBV

Form Fields:
Data Type: DOUBLE
Size/Capacity: 1
Is Channel Array?
Units:
Default Plotting Min: 0.0
Default Plotting Max: 0.0
Description: generalized magnetic field readback
Absolute Tolerance: 0
Relative Tolerance: 0
Subsystem: ALL
Keyword: MAGNET.ML.FIELD.RBV

Buttons: Add, Remove, Send Request

Archive Request Form

Central Archiver Entry Request - Message (Plain Text)

File Message Insert Options Format Text Review Developer

Cut Copy Paste Format Painter Clipboard Basic Text Names Include Tags Zoom

To... Froehlich, Lars

Cc...

Send Subject: Central Archiver Entry Request

Please, add the following entries to the central archiver:

Target Address: /XFEL/MAGNET.ML/SOLA.23.I1[KICK.RBV]
Data Type: DOUBLE
Size/capacity: 1
Is channel array: false
Units:
Default Plotting Min: 0.0
Default Plotting Max: 0.0
Description: generalized kick readback (units based on radians)
Absolute Tolerance: 0.0
Relative Tolerance: 0.05
Subsystem: ALL
Suggested Keyword: MAGNET.ML.KICK.RBV

Target Address: /XFEL/MAGNET.ML/SOLA.23.I1[FIELD.RBV]
Data Type: DOUBLE
Size/capacity: 1
Is channel array: false

Send to:
tine_admins@desy.de

Froehlich, Lars

Connect to social networks to show profile photos and activity updates of your colleagues in Outlook. Click here to add networks.

All Items
Activities
Mail

There are no items to show in this view.

TINE Studio Apps ...

- 'jaka web start'
 - Is being used and works like a charm
 - As long as there is no attention disorder in the .jnlp files
 - (href should point to itself).
 - Need to sort through installation use-cases.
 - Jaws.bat and jaws.jar need to be on the path and it works out of the box.

.NET

- There is now a 'Printing.dll' for use in VB.NET, C#, etc.
 - Handles printing elements of the application, etc. as in the old 'print.ocx' ActiveX control.
- Next: a Spider.NET control !

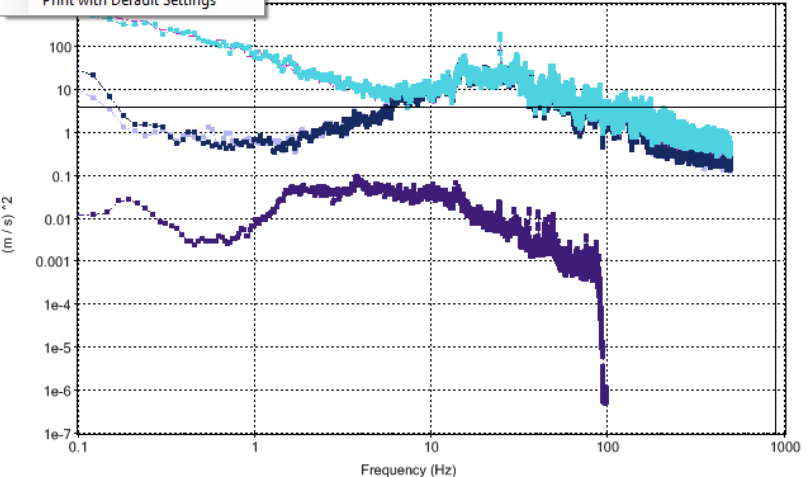
.NET printing

Vibration Client for Servers: Guralp-SITE + PCB/DT9837

Printing | Select Systems | Data Options | Graphics | Additional Windows | Options | Export Data | About ...

Print Preview
Print with Default Settings

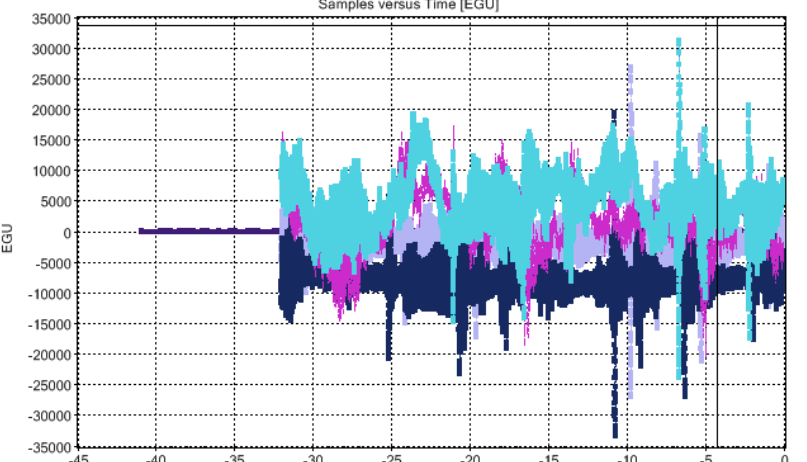
Spectrum [Averaged at Server]: 12:09:37 14-Sep-16



(m/s)²

Frequency (Hz)

Samples versus Time [EGU]



EGU

Data to Display

Analysis Buffer
 2.0 sec
 16.0 sec
 32.0 sec

FFT Amplitude/Power
 Single Ave
 FFT Phase Oversampled

Signal Samples
 Egu Volts for FFT

Trend of RMS

refresh links

Servers / Devices

Guralp PETRA HERA

- 3171z0 Desc
- 3171n0 Desc
- 3171e0 Desc
- 3G13z0 Desc
- 3G13n0 Desc
- 3G13e0 Desc

PCB/DT9837

- PCB-1
- PCB-2
- BK-1
- BK-2

Plot Option

- Update
- Calc FI
- Ha
- Lim
- Slo
- Aut
- Set

Freq M

Cursor

Reference

- None
- Currer

Import F

.NET printing

