

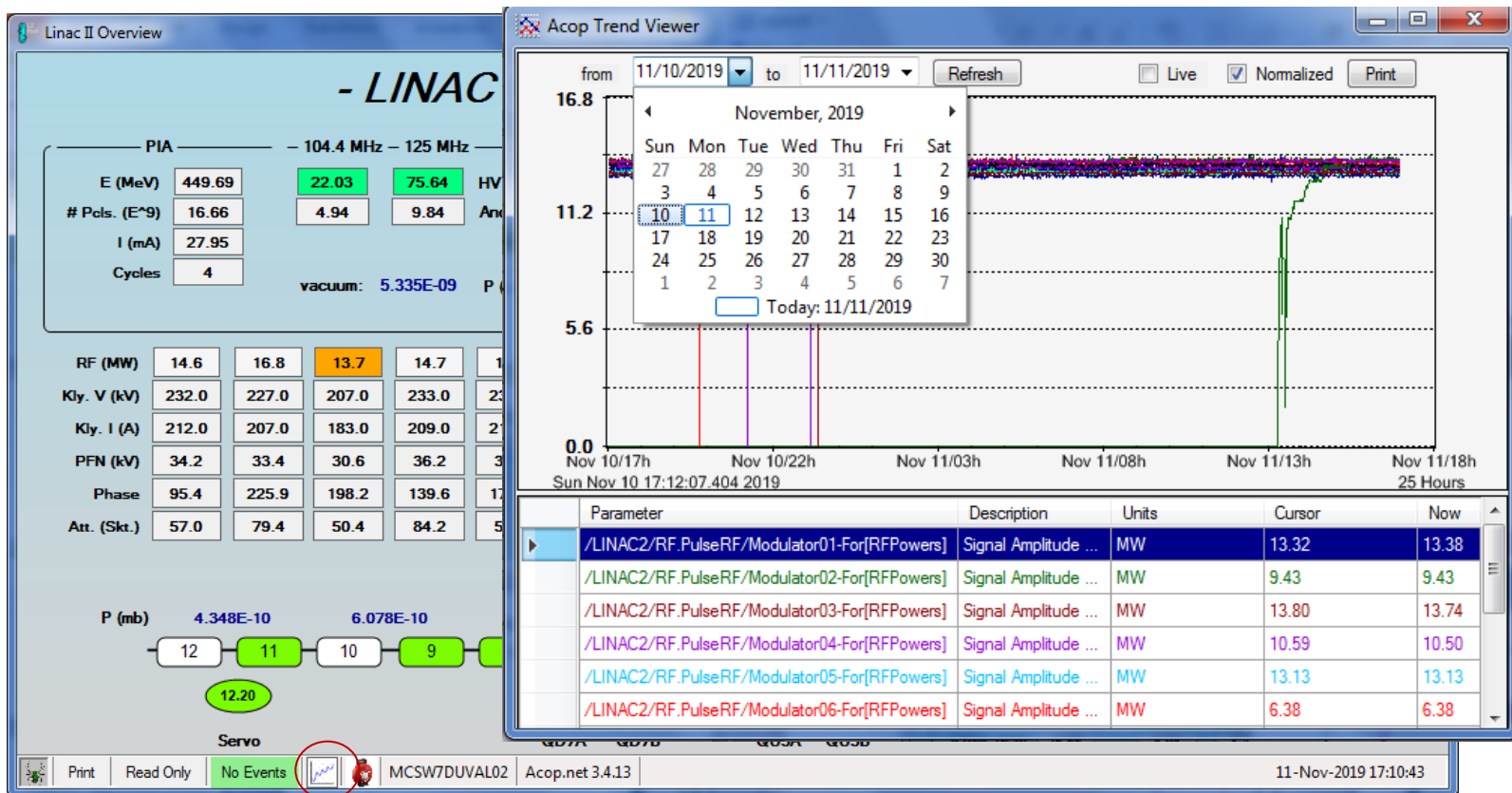


Acop.Net

The best ACOP there's ever been ...

ACOP Trend Viewer:

- live vs. history mode
- optical zooming in history mode



ACOP Alarms Viewer

- live vs. history mode
- Alarms from central source or targeted server

The screenshot shows the 'Alarms of Selected Servers' window. At the top, there are radio buttons for 'Fatal', 'Errors', and 'Warnings' (selected), and a checkbox for 'Active Only'. A 'blink:' dropdown is set to 'active alarms'. The time is '11/11/2019 5:17:36 PM'. The main list shows the following data:

Time	Source	Message	Time
11.11.19 12:28:59	Modulator01	=> Shunt Diode (Fehlanpassung)	<= 11.11.19 12:29:04 (4 secs)
11.11.19 12:28:58	Modulator01	=> Pulsdauerfehler Klystron	<= 11.11.19 12:28:58 (0 secs)
11.11.19 11:27:41	Modulator05	=> Shunt Diode (Fehlanpassung)	<= 11.11.19 11:27:41 (0 secs)
11.11.19 09:31:57	Modulator12	=> Pulsdauerfehler Klystron	<= 11.11.19 09:31:57 (0 secs)
11.11.19 08:36:42	Modulator12	=> Pulsdauerfehler Klystron	<= 11.11.19 08:36:46 (4 secs)
11.11.19 08:36:41	Modulator12	=> Shunt Diode (Fehlanpassung)	<= 11.11.19 08:36:46 (4 secs)
11.11.19 08:26:34	Modulator04	=> Shunt Diode (Fehlanpassung)	<= 11.11.19 08:26:39 (4 secs)
11.11.19 08:26:34	Modulator04	=> Pulsdauerfehler Klystron	<= 11.11.19 08:26:38 (3 secs)
11.11.19 06:20:39	Modulator04	=> Shunt Diode (Fehlanpassung)	<= 11.11.19 06:20:49 (9 secs)
11.11.19 04:06:19	Modulator05	=> Shunt Diode (Fehlanpassung)	<= 11.11.19 04:06:24 (4 secs)
11.11.19 03:43:15	Modulator05	=> Shunt Diode (Fehlanpassung)	<= 11.11.19 03:43:20 (4 secs)
11.11.19 03:43:15	Modulator05	=> Pulsdauerfehler Klystron	<= 11.11.19 03:43:18 (2 secs)
11.11.19 02:20:29	Modulator04	=> Shunt Diode (Fehlanpassung)	<= 11.11.19 02:20:34 (4 secs)
11.11.19 02:20:29	Modulator04	=> Pulsdauerfehler Klystron	<= 11.11.19 02:20:33 (3 secs)
11.11.19 01:49:24	Modulator02	=> Pulsdauerfehler Klystron	<= 11.11.19 01:49:27 (2 secs)
11.11.19 01:49:23	Modulator02	=> Shunt Diode (Fehlanpassung)	<= 11.11.19 01:49:28 (4 secs)
11.11.19 01:12:32	Modulator01	=> Pulsdauerfehler Klystron	<= 11.11.19 01:12:35 (2 secs)
11.11.19 01:12:28	Modulator01	=> Shunt Diode (Fehlanpassung)	<= 11.11.19 01:12:33 (4 secs)

Below the list is a summary table:

Source	Nr. Alarms	Nr. Active
/LINAC2/CAS/SYS:L2-Protokoll	34	0

The background 'Linac II Overview' panel shows parameters for PIA (E: 449.69 MeV, # Pcls: 16.66, I: 27.95 mA, Cycles: 4), RF (14.6 MW), Kly. V (232.0 kV), Kly. I (212.0 A), PFN (34.2 kV), Phase (95.4), Att. (57.0 Skt.), and P (4.348E-10 mb). A beamline diagram at the bottom shows stations 12, 11, 10, 9, 8, 7, 6, 5, 4, 3, 1, and GUN1. A 'Servo' section shows 12.20 and a status icon for MCSW7DUVAL02.

[Acop.NET]

- Status Bar:
 - Dialog and info items (a la mstApp)
- Demos :
 - The Status bar with examples for
 - Application Mode
 - Trend Viewer
 - Alarms Viewer
 - Run-time drag and drops ...